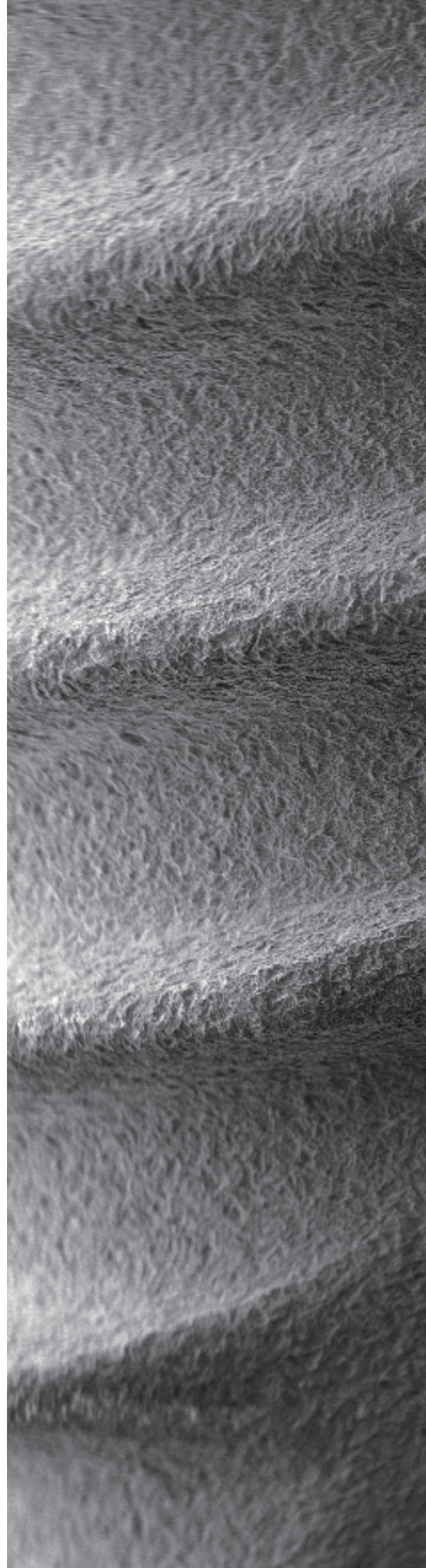


SQ Submerged
Qualified

Stress-free implant placement with Qualified result.

Contents

Contents	2
SQ Characteristics	4
SQ Mini	6
SQ Regular	7
SQ Wide	8
SQ Package	10
SQ-SL Fixture Specifications	12
SQ-SL Fixture Line-Up	13
Cover Screw & Healing Abutment	16
Prosthetic Flow Diagrams for SQ Sole System	20
Prosthetic Flow Diagrams for SQ Couple System	26
Prosthetic Flow Diagrams for SQ sub Octa System	48
Prosthetic Flow Diagrams for SQ Overdenture System	52
SQ Surgical Kit	56
SQ Surgical Manual	57
Drilling & Fixture Placement Concept	59
SQ Surgical Instrument	62

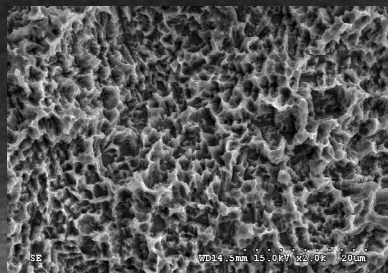




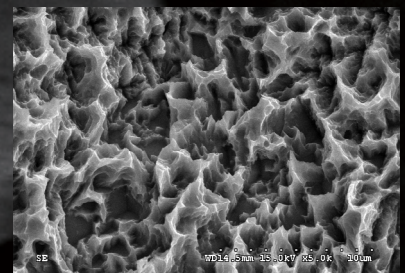
S.L.A. Surface

Excellent Osseo-Integration with SLA surface.

x 2,000



x 5,000



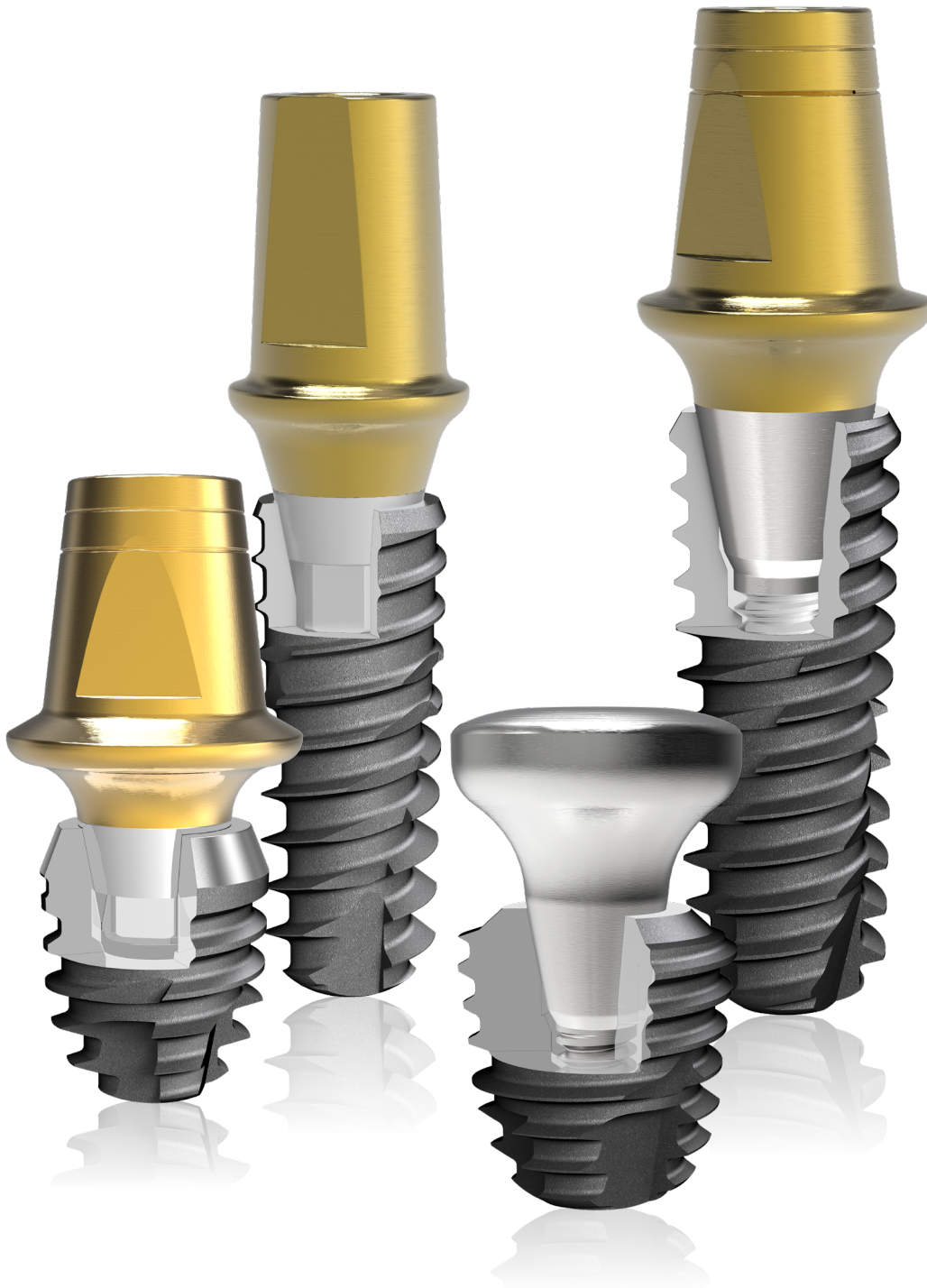
Quality Control

Clean implant with automatic cleaning system



Vacuum cleaning machine

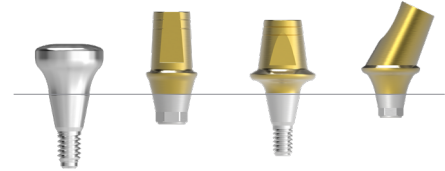
SQ Characteristics



Simple & Easy Depth Control

– Self-tapping figure may allow easier depth control without additional drilling

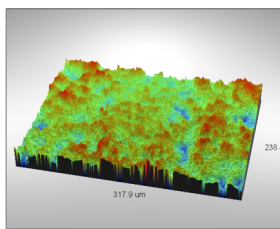
Improved Joint-Stability



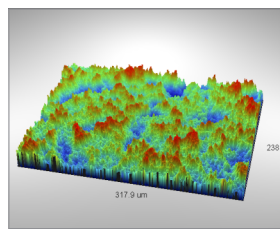
〈 compatible with the whole OneQ & SQ 〉

S.L.A Surface

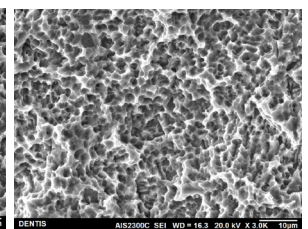
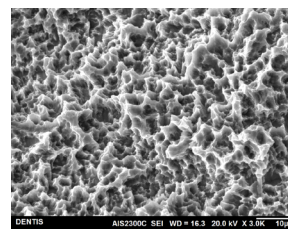
– 200% enhanced surface area compare to RBM Surface



Sdr of RBM : 43.93%

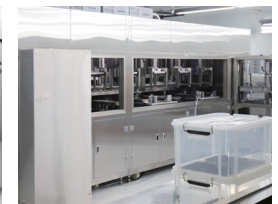


Sdr of SLA : 139.18%

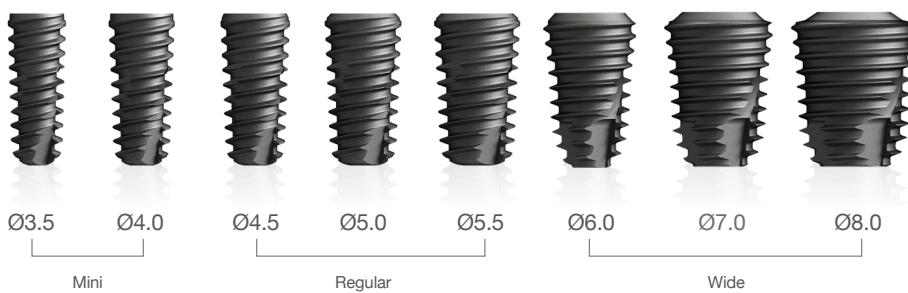


Strict Cleaning

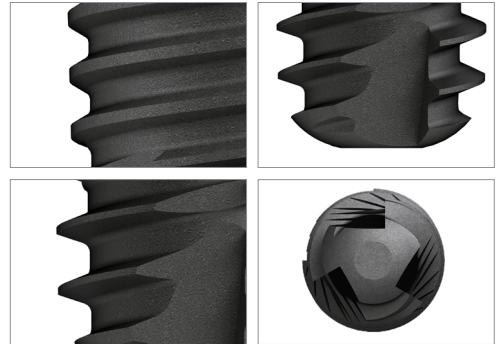
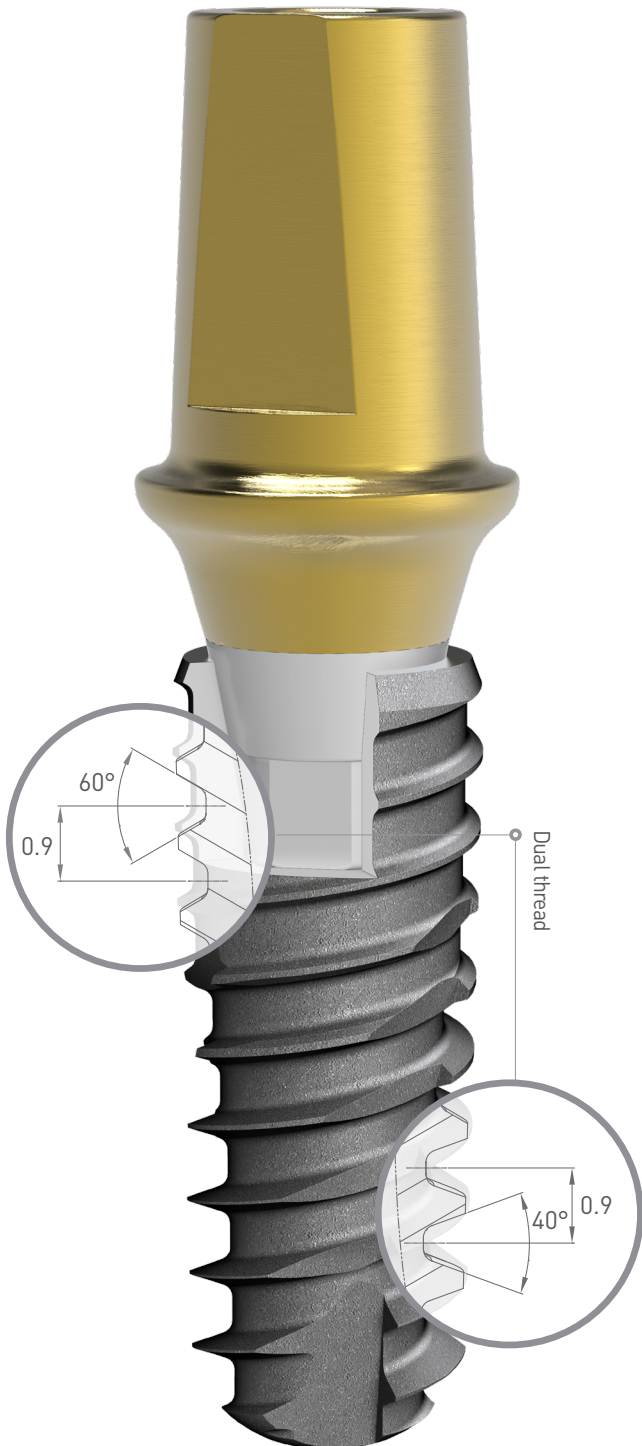
– 30 and more steps of automatic cleaning system including vacuum cleaning machine
 – Strict quality control and safe S.L.A surface for residue Acid



SQ Fixture Line Up



SQ Mini

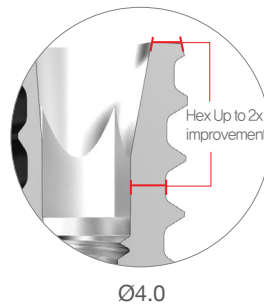


High Initial Stability

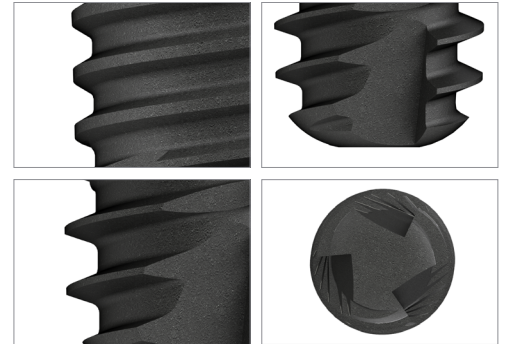
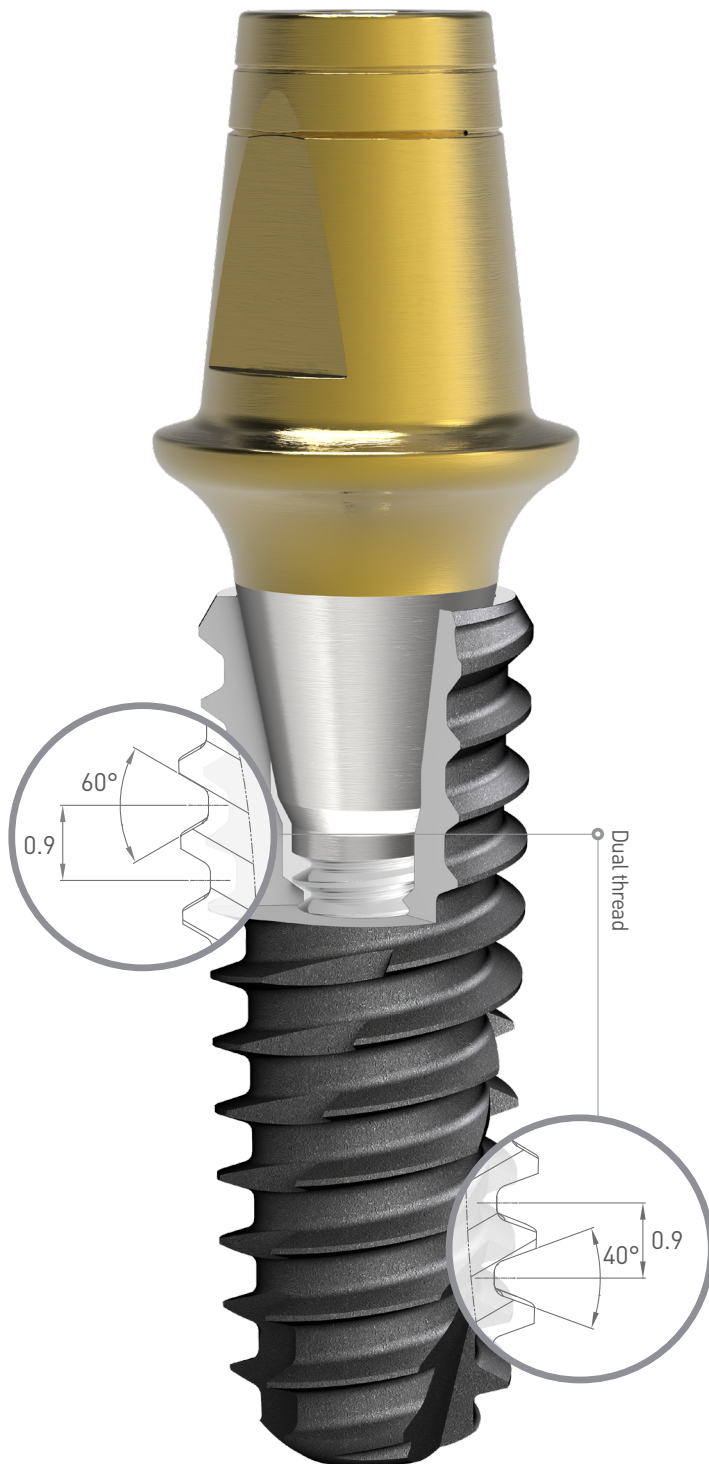
- Tapered design
- Dual & Open Thread

Smoother Insertion

- 3 Blade & Helical wide cutting edge



SQ Regular



High Initial Stability

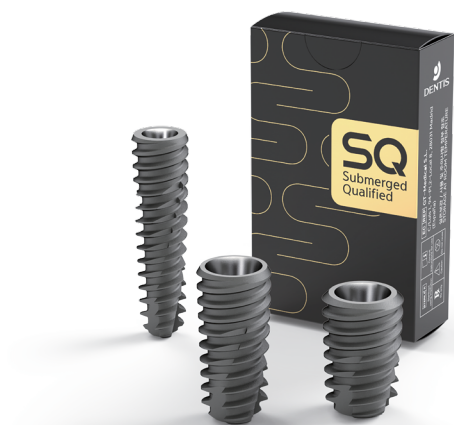
- Tapered design
- Dual & Open Thread

Smoother Insertion

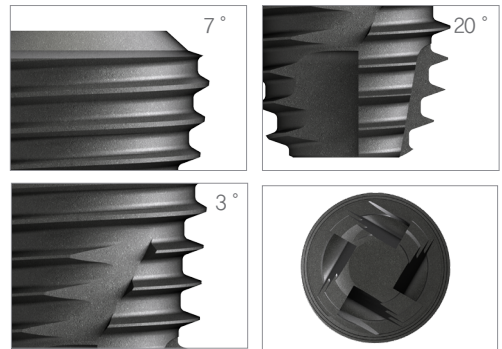
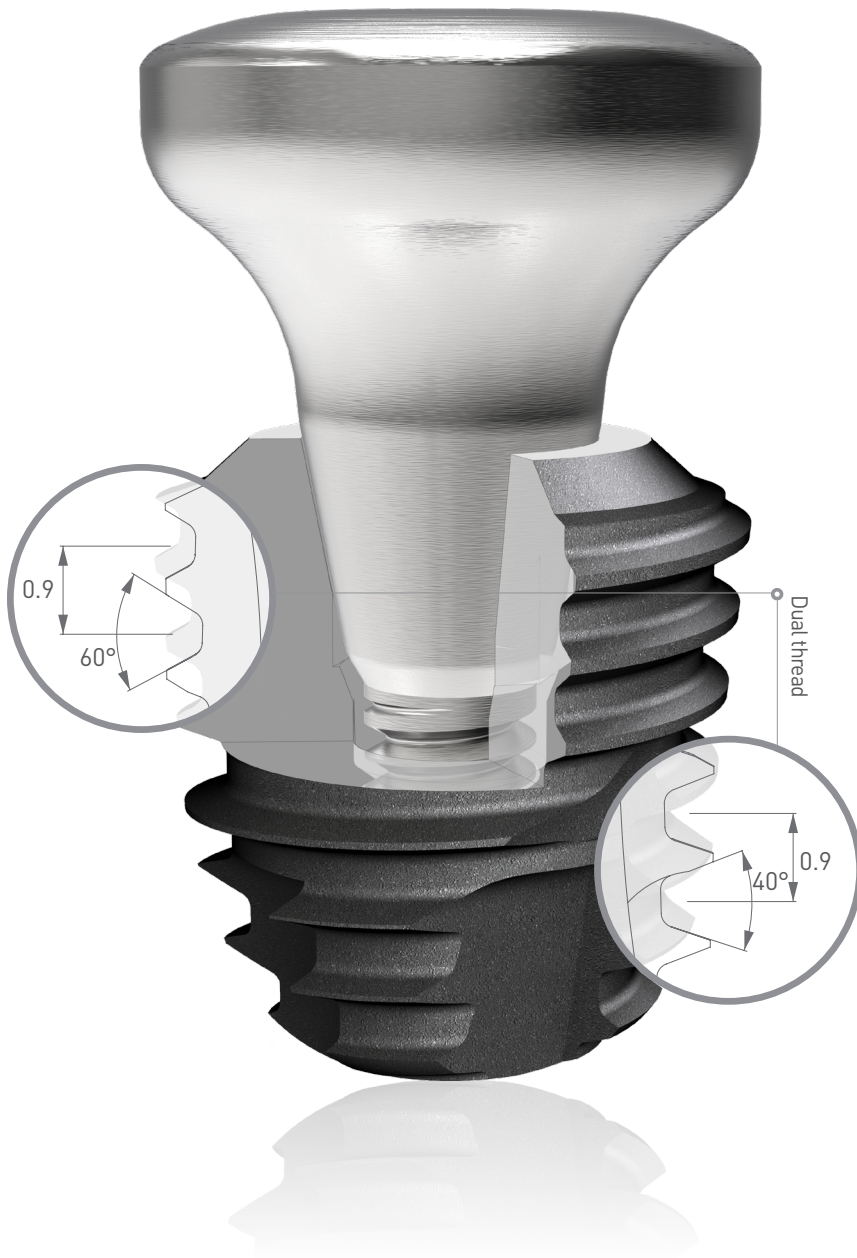
- 3 Blade & Helical wide cutting edge

Open Thread

- Prevents bone necrosis



SQ Wide



High Initial Stability

- Tapered design (7° / 3° / 20°)
- Reversed Tapered Bevel

Smoother Insertion

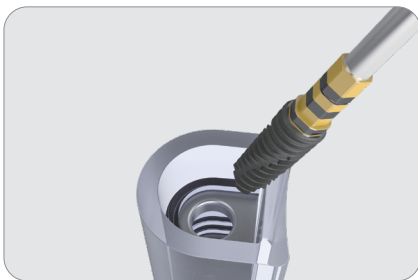
- 4 Blade & Helical wide cutting edge





SQ Package

Ampoule



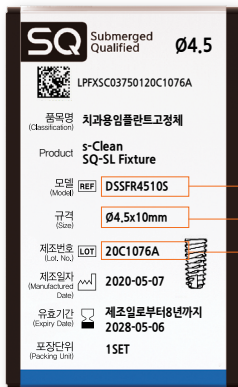
Fixture pick-up



- Ø3.5
- Ø4.0
- Ø4.5
- Ø5.0
- Ø5.5
- Ø6.0
- Ø7.0
- Ø8.0

Fixture Package

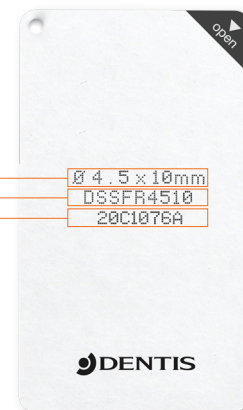
- Ø3.5
- Ø4.0
- Ø4.5
- Ø5.0
- Ø5.5
- Ø6.0
- Ø7.0
- Ø8.0



Model

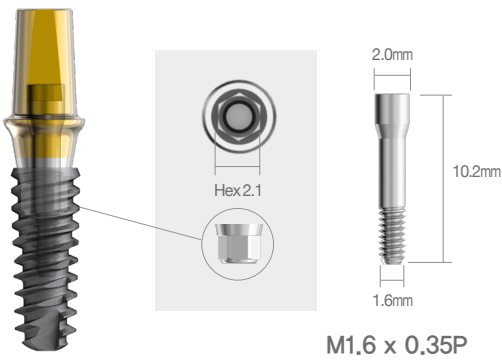
Size

Lot no)



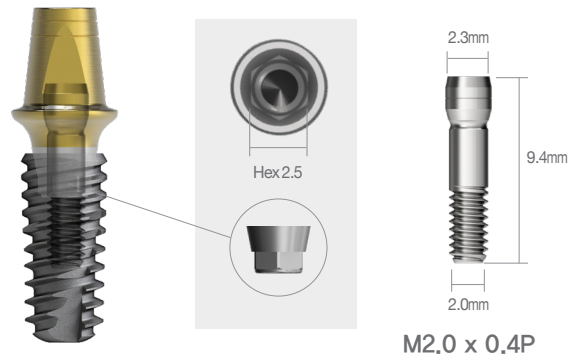
Abutment Spec

Mini



※Recommended torque: 30Ncm

Regular/Wide



※Recommended torque: 30Ncm

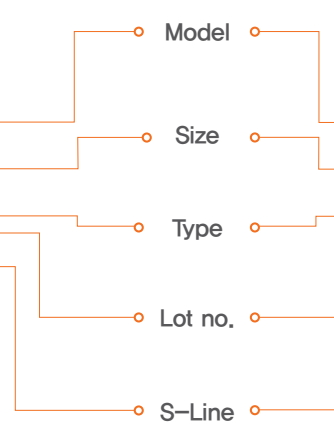
Abutment Package

Mini

	s-Clean TiN Harf Coating Angled Abutment, S-Line
(01)08806169106384(11)180618(10)17C369A	
품목명 (Classification)	치과용임플란트상부구조물
Product	S-Clean Abutment
REF 모델 (Model)	DSAMZ402537FTS
규격 (Size)	Ø4.0, G/H:3mm, 25°
타입 (Type)	S-Clean, Mini, Flat
LOT 제조번호 (Lot, No.)	20D845A
제조일자 (Manufactured Date)	2020.05.14
유효기간 (Expiry Date)	N/A
포장단위 (Packing Unit)	1SET
품목허가번호 (MDS Product License No.)	제인06-190호
	일화용의료기기 / 재사용금지 실온보관 / Storage at room temperature, AL01(R04)

Regular / Wide

	s-Clean TiN Harf Coating Angled Abutment, S-Line
(01)08806169106384(11)180618(10)17C369A	
품목명 (Classification)	치과용임플란트상부구조물
Product	S-Clean Abutment
REF 모델 (Model)	DSAAMZ402577HTS
규격 (Size)	Ø4.0, G/H:7.0mm, 25°
타입 (Type)	s-Clean HEX Half
LOT 제조번호 (Lot, No.)	20D845S
제조일자 (Manufactured Date)	2020.05.14
유효기간 (Expiry Date)	N/A
포장단위 (Packing Unit)	1SET
품목허가번호 (MDS Product License No.)	제인06-190호
	일화용의료기기 / 재사용금지 실온보관 / Storage at room temperature, AL01(R04)



SQ-SL Fixture Specifications

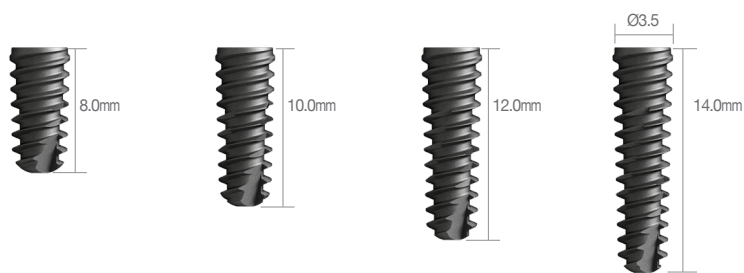


A	Diameter	3.5	4.0	4.5	5.0	5.5	6.0	7.0	8.0	
	Fixture									
B	Length	8 / 10 / 12 / 14		7 / 8 / 10 / 12 / 14			7 / 8 / 10 / 12			
C	Hex	2.1Hex			2.5Hex					
D	Color									
	Guideline	Anterior	Anterior	Premolar	Molar	Molar	Molar	Molar	Molar	

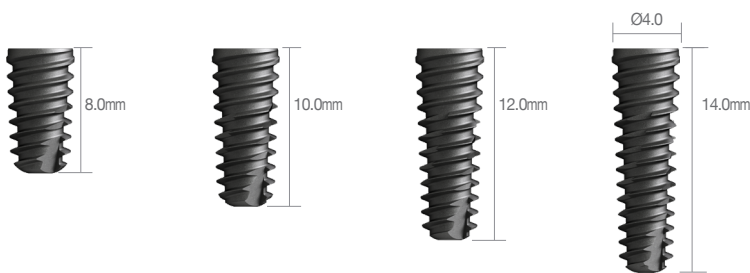
※ Length : 8~14mm - 0.5mm shorter than written length
 ※ Nominal diameter does not correspond to the actual dimension

SQ-SL Fixture Line-Up

Mini

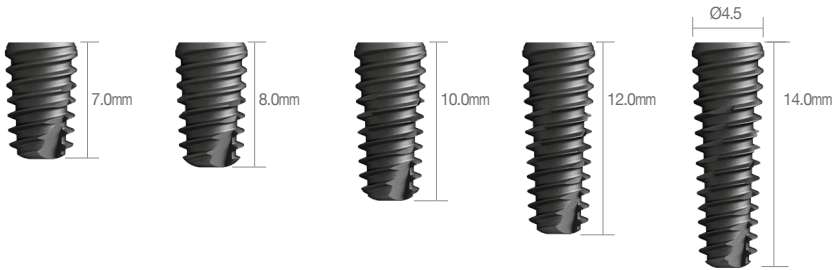
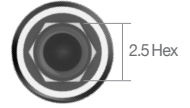


Fixture Diameter	Length	Code No.
Ø3.5	8.0mm	DSSFM3508S
	10.0mm	DSSFM3510S
	12.0mm	DSSFM3512S
	14.0mm	DSSFM3514S

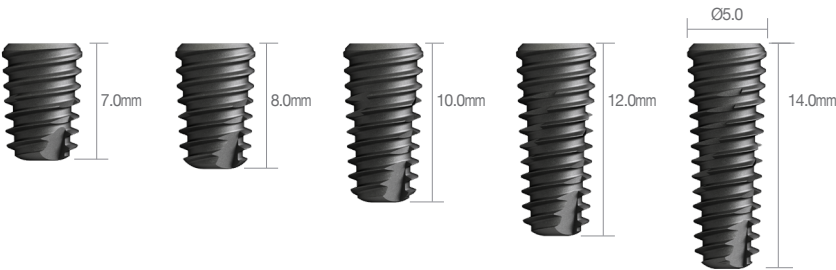
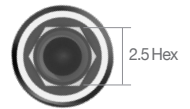


Fixture Diameter	Length	Code No.
Ø4.0	8.0mm	DSSFM4008S
	10.0mm	DSSFM4010S
	12.0mm	DSSFM4012S
	14.0mm	DSSFM4014S

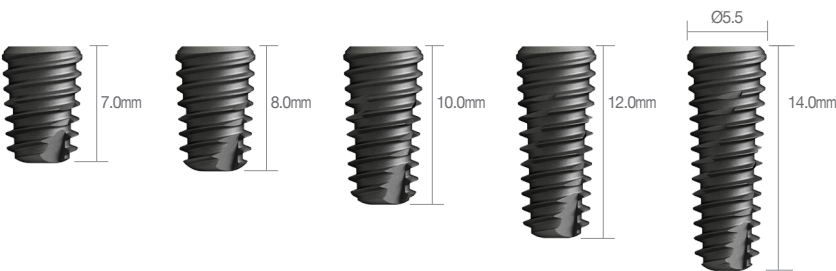
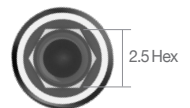
Regular



Fixture Diameter	Length	Code No.
Ø4.5	7.0mm	DSSFR4507S
	8.0mm	DSSFR4508S
	10.0mm	DSSFR4510S
	12.0mm	DSSFR4512S
	14.0mm	DSSFR4514S

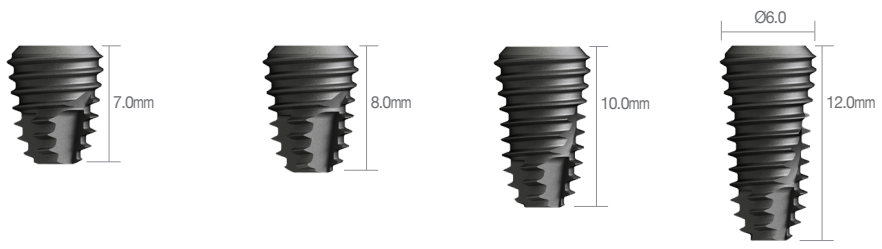


Fixture Diameter	Length	Code No.
Ø5.0	7.0mm	DSSFR5007S
	8.0mm	DSSFR5008S
	10.0mm	DSSFR5010S
	12.0mm	DSSFR5012S
	14.0mm	DSSFR5014S

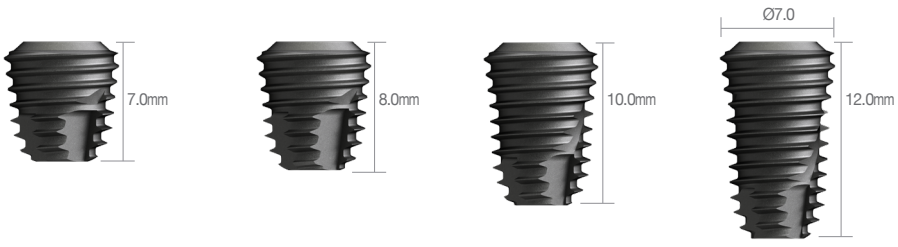


Fixture Diameter	Length	Code No.
Ø5.5	7.0mm	DSSFR5507S
	8.0mm	DSSFR5508S
	10.0mm	DSSFR5510S
	12.0mm	DSSFR5512S
	14.0mm	DSSFR5514S

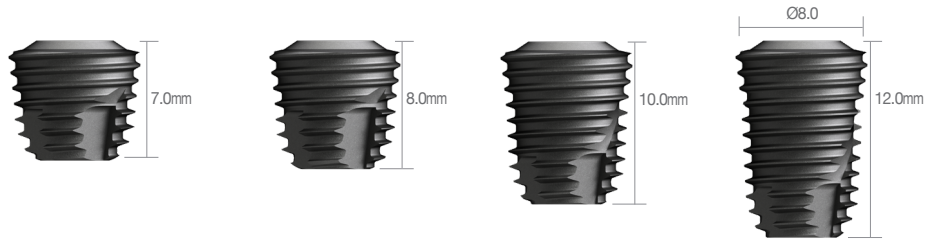
Wide



Fixture Diameter	Length	Code No.
Ø6.0	7.0mm	DSSFW6007S
	8.0mm	DSSFW6008S
	10.0mm	DSSFW6010S
	12.0mm	DSSFW6012S



Fixture Diameter	Length	Code No.
Ø7.0	7.0mm	DSSFW7007S
	8.0mm	DSSFW7008S
	10.0mm	DSSFW7010S
	12.0mm	DSSFW7012S



Fixture Diameter	Length	Code No.
Ø8.0	7.0mm	DSSFW8007S
	8.0mm	DSSFW8008S
	10.0mm	DSSFW8010S
	12.0mm	DSSFW8012S

Cover Screw & Healing Abutment

▶ A/D : Abutment Diameter ▶ P/H : Post Height ▶ G/H : Gingiva Height

Cover Screw

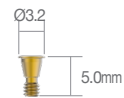
Mini Recommended torque- 5~8Ncm



DSCSMM + DSSFM3510

Code No.

DSCSMM



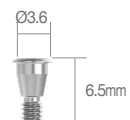
Regular / Wide



DSCSM + DSSFR4510

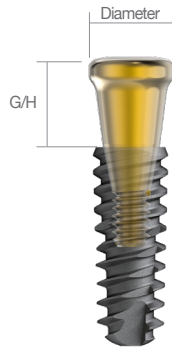
Code No.

DSCSM



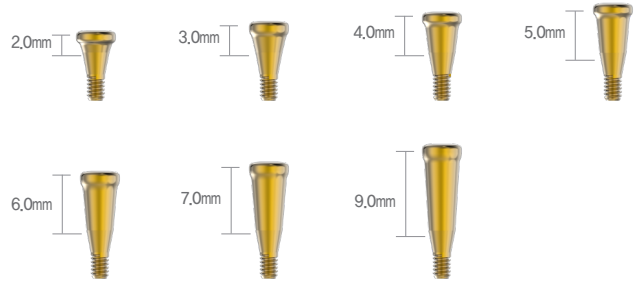
Healing Abutment

Mini Recommended torque – 10Ncm

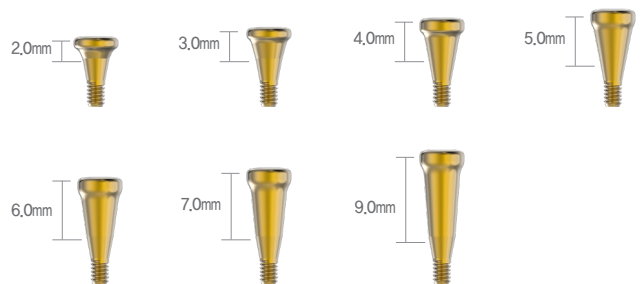


DSHMZ4340 + DSSFM3510

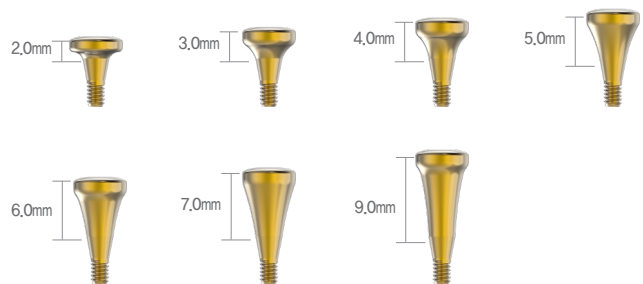
Abutment Diameter	G/H	Code No.
4.3	2.0mm	DSHMZ4320
	3.0mm	DSHMZ4330
	4.0mm	DSHMZ4340
	5.0mm	DSHMZ4350
	6.0mm	DSHMZ4360
	7.0mm	DSHMZ4370
	9.0mm	DSHMZ4390



Abutment Diameter	G/H	Code No.
4.8	2.0mm	DSHMZ4820
	3.0mm	DSHMZ4830
	4.0mm	DSHMZ4840
	5.0mm	DSHMZ4850
	6.0mm	DSHMZ4860
	7.0mm	DSHMZ4870
	9.0mm	DSHMZ4890



Abutment Diameter	G/H	Code No.
5.8	2.0mm	DSHMZ5820
	3.0mm	DSHMZ5830
	4.0mm	DSHMZ5840
	5.0mm	DSHMZ5850
	6.0mm	DSHMZ5860
	7.0mm	DSHMZ5870
	9.0mm	DSHMZ5890

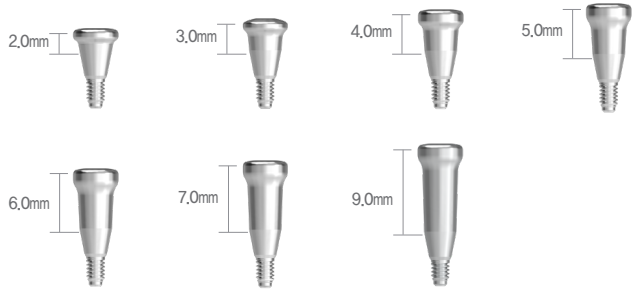


Regular / Wide Recommended torque – 10Ncm **S-LINE**
ABUTMENT

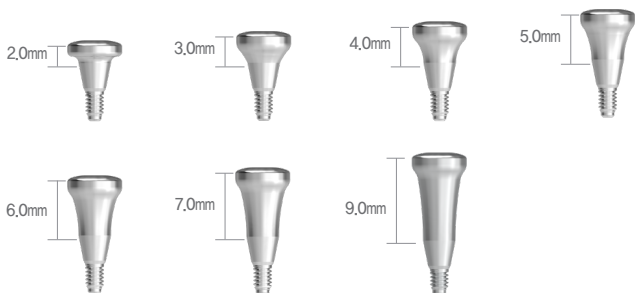


DSHZ5840 + DSSFR4510

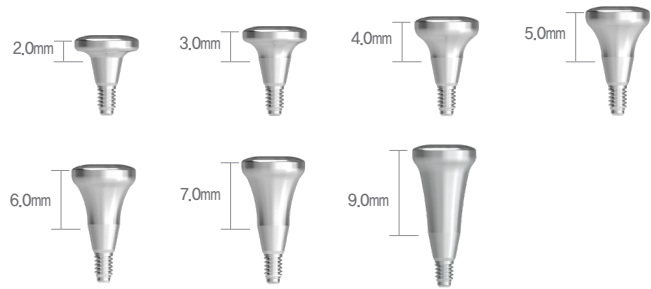
Abutment Diameter	G/H	Code No.
Ø4.5	2.0mm	DSHZ4820
	3.0mm	DSHZ4830
	4.0mm	DSHZ4840
	5.0mm	DSHZ4850
	6.0mm	DSHZ4860
	7.0mm	DSHZ4870
	9.0mm	DSHZ4890



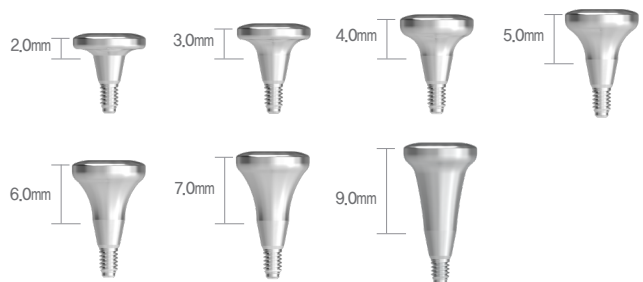
Abutment Diameter	G/H	Code No.
Ø5.5	2.0mm	DSHZ5820
	3.0mm	DSHZ5830
	4.0mm	DSHZ5840
	5.0mm	DSHZ5850
	6.0mm	DSHZ5860
	7.0mm	DSHZ5870
	9.0mm	DSHZ5890



Abutment Diameter	G/H	Code No.
Ø6.5	2.0mm	DSHZ6820
	3.0mm	DSHZ6830
	4.0mm	DSHZ6840
	5.0mm	DSHZ6850
	6.0mm	DSHZ6860
	7.0mm	DSHZ6870
	9.0mm	DSHZ6890



Abutment Diameter	G/H	Code No.
Ø7.5	2.0mm	DSHZ7820
	3.0mm	DSHZ7830
	4.0mm	DSHZ7840
	5.0mm	DSHZ7850
	6.0mm	DSHZ7860
	7.0mm	DSHZ7870
	9.0mm	DSHZ7890





Prosthetic Flow Diagrams for SQ Sole System

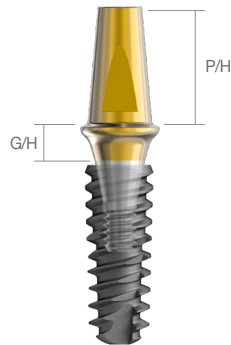
Abutment Level Impression / Cemented Restoration

 Mini Type

Description	Flow	Tool
Plastic Coping		 Reamer
Lab Analog		
Impression Cap		
Abutment		 1.25 Hex Driver
		 1.25 Hex Driver
SQ Fixture		 No-Mount Driver Patchet Driver

Sole Abutment **-LINE** ABUTMENT

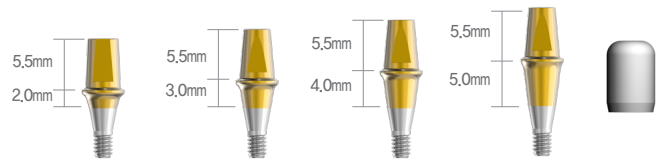
Mini Recommended torque – Mini size : 30Ncm



DSSAMZ45207TS + DSSFM3510

Abutment Diameter	G/H	P/H	Code No.
Ø4.5	2.0mm	5.5mm	DSSAMZ4520TS
	3.0mm		DSSAMZ4530TS
	4.0mm		DSSAMZ4540TS
	4.0mm		DSSAMZ4540TS
	5.0mm		DSSAMZ4550TS

※ Set Code(S) : Abutment + Healing Cap[DSHC455]



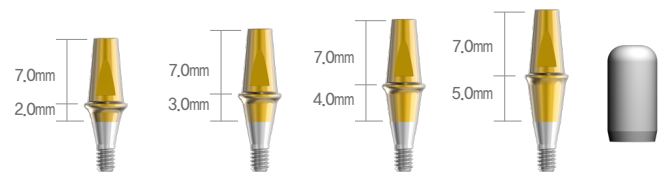
Abutment Diameter	G/H	P/H	Code No.
Ø5.5	2.0mm	5.5mm	DSSAMZ5520TS
	3.0mm		DSSAMZ5530TS
	4.0mm		DSSAMZ5540TS
	4.0mm		DSSAMZ5540TS
	5.0mm		DSSAMZ5550TS

※ Set Code(S) : Abutment + Healing Cap[DSHC555]



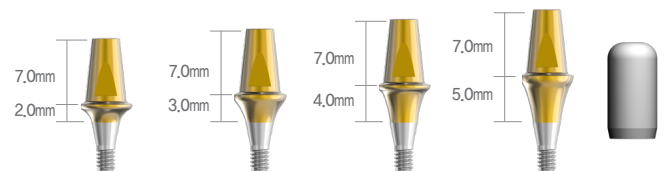
Abutment Diameter	G/H	P/H	Code No.
Ø4.5	2.0mm	7.0mm	DSSAMZ45207TS
	3.0mm		DSSAMZ45307TS
	4.0mm		DSSAMZ45407TS
	4.0mm		DSSAMZ45407TS
	5.0mm		DSSAMZ45507TS

※ Set Code(S) : Abutment + Healing Cap[DSHC457]



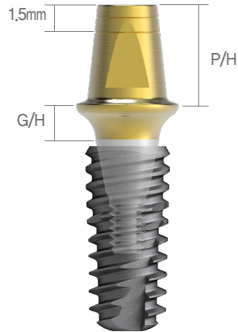
Abutment Diameter	G/H	P/H	Code No.
Ø5.5	2.0mm	7.0mm	DSSAMZ55207TS
	3.0mm		DSSAMZ55307TS
	4.0mm		DSSAMZ55407TS
	4.0mm		DSSAMZ55407TS
	5.0mm		DSSAMZ55507TS

※ Set Code(S) : Abutment + Healing Cap[DSHC557]



Sole Abutment **S-LINE** ABUTMENT

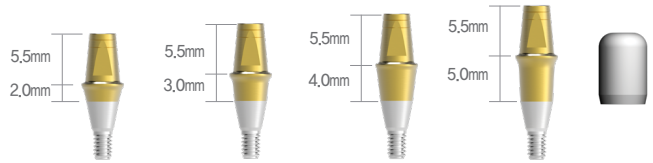
Regular / Wide Recommended torque – Regular, wide size : 30Ncm



DSSAZ5520HCT + DSSFR4510

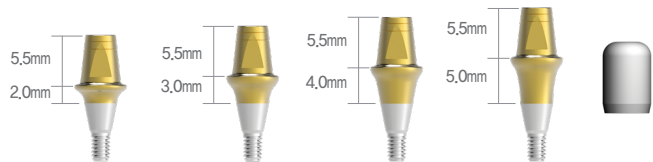
Abutment Diameter	G/H	P/H	Code No.
Ø4.5	2.0mm	5.5mm	DSSAZ4520HCTS
	3.0mm		DSSAZ4530HCTS
	4.0mm		DSSAZ4540HCTS
	5.0mm		DSSAZ4550HCTS

※ Set Code(S) : Abutment + Healing Cap[DSHC455]



Abutment Diameter	G/H	P/H	Code No.
Ø5.5	2.0mm	5.5mm	DSSAZ5520HCTS
	3.0mm		DSSAZ5530HCTS
	4.0mm		DSSAZ5540HCTS
	5.0mm		DSSAZ5550HCTS

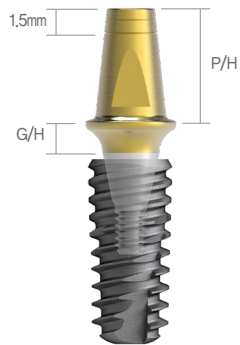
※ Set Code(S) : Abutment + Healing Cap[DSHC555]



Abutment Diameter	G/H	P/H	Code No.
Ø6.5	2.0mm	5.5mm	DSSAZ6520HCTS
	3.0mm		DSSAZ6530HCTS
	4.0mm		DSSAZ6540HCTS
	5.0mm		DSSAZ6550HCTS

※ Set Code(S) : Abutment + Healing Cap[DSH655]

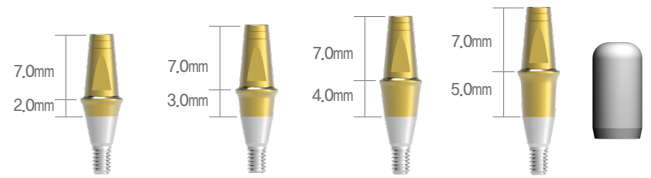




DSSAZ55207HCT + DSSFR4510

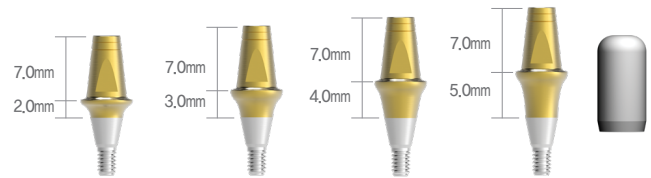
Abutment Diameter	G/H	P/H	Code No.
Ø4.5	2.0mm	7.0mm	DSSAZ45207HCTS
	3.0mm		DSSAZ45307HCTS
	4.0mm		DSSAZ45407HCTS
	5.0mm		DSSAZ45507HCTS

※ Set Code(S) : Abutment + Healing Cap[DSHC457]



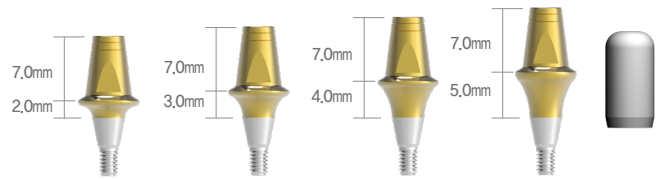
Abutment Diameter	G/H	P/H	Code No.
Ø5.5	2.0mm	7.0mm	DSSAZ55207HCTS
	3.0mm		DSSAZ55307HCTS
	4.0mm		DSSAZ55407HCTS
	5.0mm		DSSAZ55507HCTS

※ Set Code(S) : Abutment + Healing Cap[DSHC557]



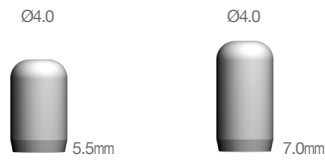
Abutment Diameter	G/H	P/H	Code No.
Ø6.5	2.0mm	7.0mm	DSSAZ65207HCTS
	3.0mm		DSSAZ65307HCTS
	4.0mm		DSSAZ65407HCTS
	5.0mm		DSSAZ65507HCTS

※ Set Code(S) : Abutment + Healing Cap[DSHC657]



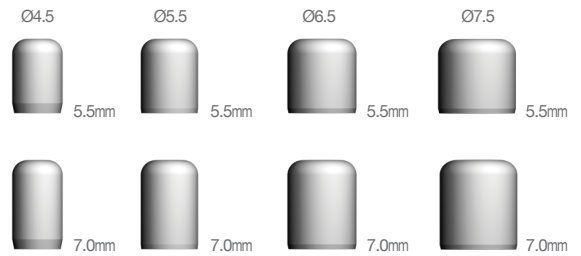
Sole Abutment Healing Cap Mini

Abutment Diameter	P/H	Code No.
Ø4.0	5.5mm 7.0mm	DSSASHC405 DSSASHC407



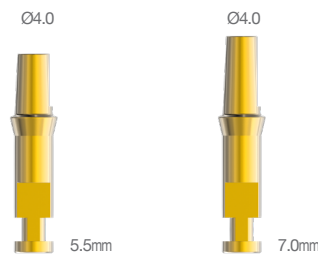
Regular / Wide

Abutment Diameter	P/H	Code No.
Ø4.5	5.5mm 7.0mm	DSHC455 DSHC457
Ø5.5	5.5mm 7.0mm	DSHC555 DSHC557
Ø6.5	5.5mm 7.0mm	DSHC655 DSHC657
Ø7.5	5.5mm 7.0mm	DSHC755 DSHC757



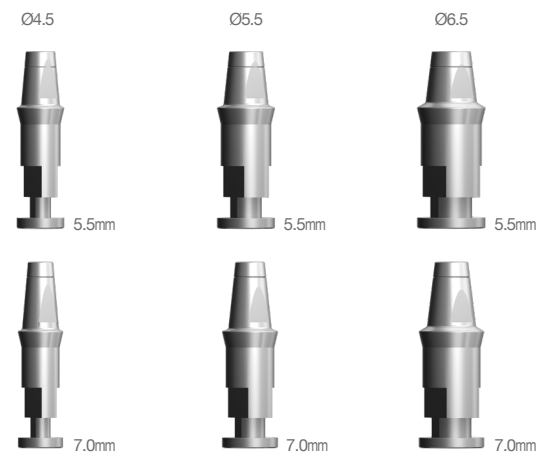
Lab Analog Mini

Abutment Diameter	P/H	Code No.
Ø4.0	5.5mm 7.0mm	DSSLAM405 DSSLAM407



Regular / Wide

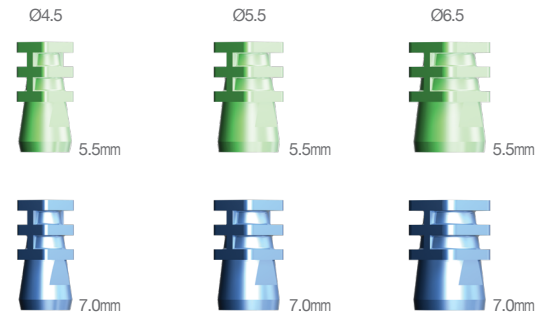
Abutment Diameter	P/H	Code No.
Ø4.5	5.5mm 7.0mm	DSSLA45 DSSLA457
Ø5.5	5.5mm 7.0mm	DSSLA55 DSSLA557
Ø6.5	5.5mm 7.0mm	DSSLA65 DSSLA657



Impression Positioning Cylinder

Regular / Wide

Abutment Diameter	P/H	Code No.
Ø4.5	5.5mm 7.0mm	DSIPC455 DSIPC457
Ø5.5	5.5mm 7.0mm	DSIPC555 DSIPC557
Ø6.5	5.5mm 7.0mm	DSIPC655 DSIPC657



Plastic Coping

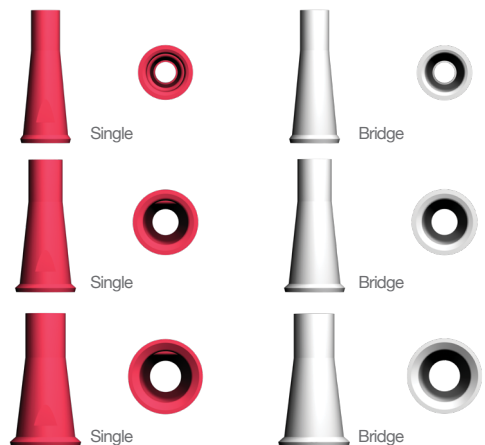
Mini

Abutment Diameter	Type	Code No.
Ø4.0	Single Bridge	DSSASP40S DSSASP40B



Regular / Wide


Abutment Diameter	Type	Code No.
Ø4.5	Single Bridge	DSSAP45S DSSAP45B
Ø5.5	Single Bridge	DSSAP55S DSSAP55B
Ø6.5	Single Bridge	DSSAP65S DSSAP65B



Prosthetic Flow Diagrams for SQ Couple System

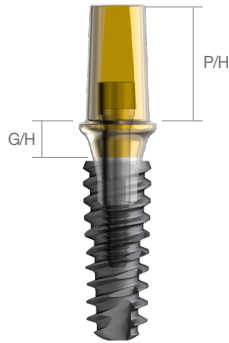
Fixture Level Impression / Cemented Restoration / Screw Restoration

M Mini Type

Description	Flow	Tool
Screw		 1,25 Hex Driver
Lab Analog		
Impression Coping		 1,25 Hex Driver Multi Use Holder
Abutment		 1,25 Hex Driver
		 1,25 Hex Driver
Fixture		 No-Mount Driver Ratchet Driver

Couple Abutment **S-LINE** ABUTMENT

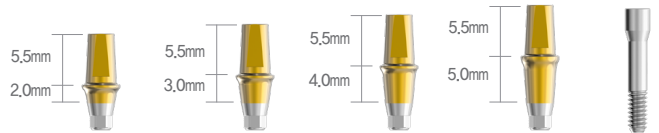
Mini [Hex] Recommended torque – Mini size : 30Ncm



DSSAMZ4020TS + DSSFM3510

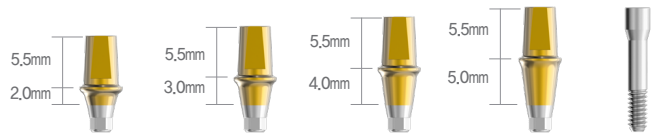
Abutment Diameter	G/H	P/H	Code No.
Ø4.0	2.0mm	5.5mm	DSCAMZ4020HTS
	3.0mm		DSCAMZ4030HTS
	4.0mm		DSCAMZ4040HTS
	5.0mm		DSCAMZ4050HTS

※ Set Code(S) : Abutment + Abutment Screw[2DSASM]



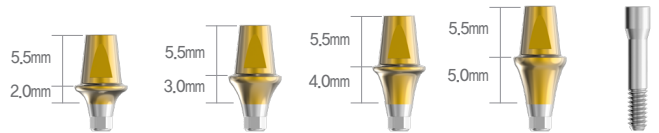
Abutment Diameter	G/H	P/H	Code No.
Ø4.5	2.0mm	5.5mm	DSCAMZ4520HTS
	3.0mm		DSCAMZ4530HTS
	4.0mm		DSCAMZ4540HTS
	5.0mm		DSCAMZ4550HTS

※ Set Code(S) : Abutment + Abutment Screw[2DSASM]



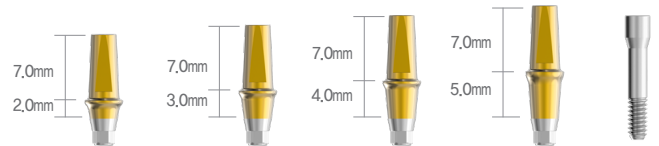
Abutment Diameter	G/H	P/H	Code No.
Ø5.5	2.0mm	5.5mm	DSCAMZ5520HTS
	3.0mm		DSCAMZ5530HTS
	4.0mm		DSCAMZ5540HTS
	5.0mm		DSCAMZ5550HTS

※ Set Code(S) : Abutment + Abutment Screw[2DSASM]



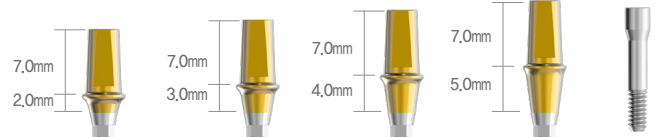
Abutment Diameter	G/H	P/H	Code No.
Ø4.0	2.0mm	7.0mm	DSCAMZ40207HTS
	3.0mm		DSCAMZ40307HTS
	4.0mm		DSCAMZ40407HTS
	5.0mm		DSCAMZ40507HTS

※ Set Code(S) : Abutment + Abutment Screw[2DSASM]



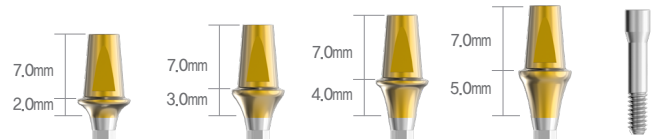
Abutment Diameter	G/H	P/H	Code No.
Ø4.5	2.0mm	7.0mm	DSCAMZ45207HTS
	3.0mm		DSCAMZ45307HTS
	4.0mm		DSCAMZ45407HTS
	5.0mm		DSCAMZ45507HTS

※ Set Code(S) : Abutment + Abutment Screw[2DSASM]



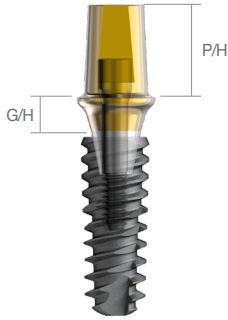
Abutment Diameter	G/H	P/H	Code No.
Ø5.5	2.0mm	7.0mm	DSCAMZ55207HTS
	3.0mm		DSCAMZ55307HTS
	4.0mm		DSCAMZ55407HTS
	5.0mm		DSCAMZ55507HTS

※ Set Code(S) : Abutment + Abutment Screw[2DSASM]



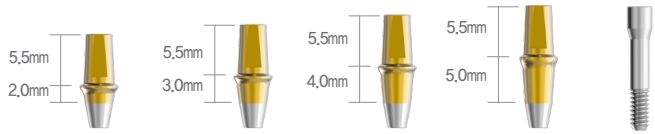
Couple Abutment **S-LINE** ABUTMENT

Mini [N-Hex] Recommended torque – Mini size : 30Ncm



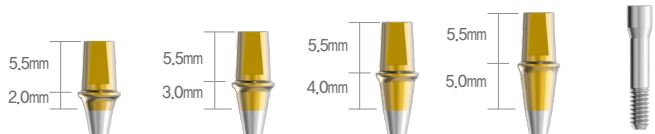
DSCAMZ4520NT + DSSFM3510

Abutment Diameter	G/H	P/H	Code No.
Ø4.0	2.0mm	5.5mm	DSCAMZ4020NTS
	3.0mm		DSCAMZ4030NTS
	4.0mm		DSCAMZ4040NTS
	5.0mm		DSCAMZ4050NTS



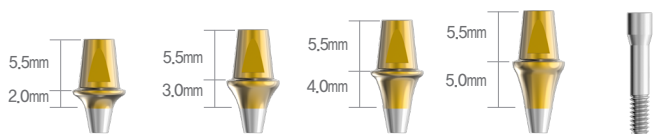
※ Set Code(S) : Abutment + Abutment Screw[2DSASM]

Abutment Diameter	G/H	P/H	Code No.
Ø4.5	2.0mm	5.5mm	DSCAMZ4520NTS
	3.0mm		DSCAMZ4530NTS
	4.0mm		DSCAMZ4540NTS
	5.0mm		DSCAMZ4550NTS

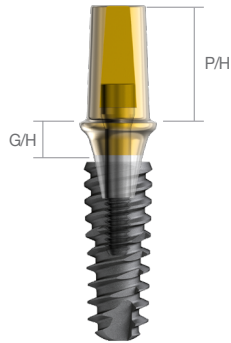


※ Set Code(S) : Abutment + Abutment Screw[2DSASM]

Abutment Diameter	G/H	P/H	Code No.
Ø5.5	2.0mm	5.5mm	DSCAMZ5520NTS
	3.0mm		DSCAMZ5530NTS
	4.0mm		DSCAMZ5540NTS
	5.0mm		DSCAMZ5550NTS

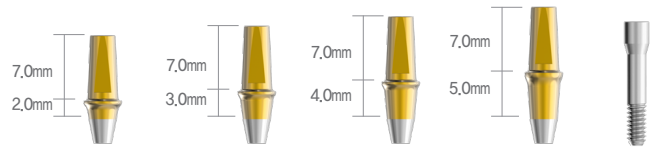


※ Set Code(S) : Abutment + Abutment Screw[2DSASM]



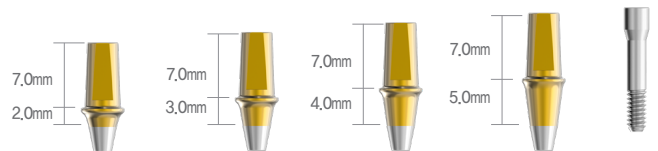
DSCAMZ45207NT + DSSFM3510

Abutment Diameter	G/H	P/H	Code No.
Ø4.0	2.0mm	7.0mm	DSCAMZ40207NTS
	3.0mm		DSCAMZ40207NTS
	4.0mm		DSCAMZ40407NTS
	5.0mm		DSCAMZ40507NTS



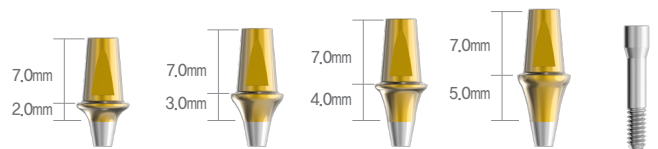
※ Set Code(S) : Abutment + Abutment Screw[2DSASM]

Abutment Diameter	G/H	P/H	Code No.
Ø4.5	2.0mm	7.0mm	DSCAMZ45207NTS
	3.0mm		DSCAMZ45307NTS
	4.0mm		DSCAMZ45407NTS
	5.0mm		DSCAMZ45507NTS



※ Set Code(S) : Abutment + Abutment Screw[2DSASM]

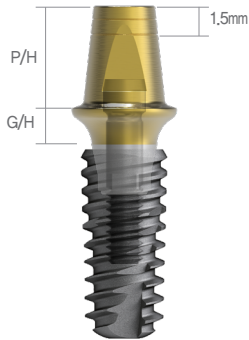
Abutment Diameter	G/H	P/H	Code No.
Ø5.5	2.0mm	7.0mm	DSCAMZ55207NTS
	3.0mm		DSCAMZ55307NTS
	4.0mm		DSCAMZ55407NTS
	5.0mm		DSCAMZ55507NTS



※ Set Code(S) : Abutment + Abutment Screw[2DSASM]

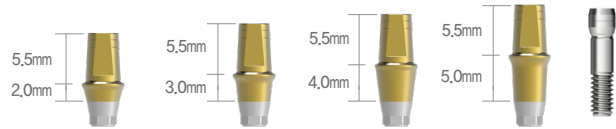
Couple Abutment **S-LINE** ABUTMENT

Regular / Wide [Hex] Recommended torque – Regular, wide size : 30Ncm



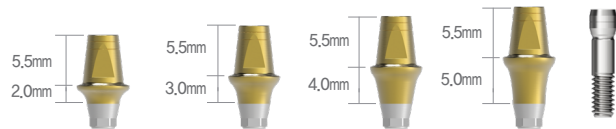
DSCAZ5520HHCTS + DSSFR4510

Abutment Diameter	G/H	P/H	Code No.
Ø4.5	2.0mm	5.5mm	DSCAZ4520HHCTS
	3.0mm		DSCAZ4530HHCTS
	4.0mm		DSCAZ4540HHCTS
	5.0mm		DSCAZ4550HHCTS



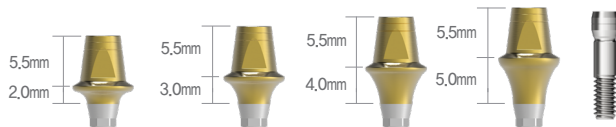
※ Set Code(S) : Abutment + Abutment Screw[2DSAS]

Abutment Diameter	G/H	P/H	Code No.
Ø5.5	2.0mm	5.5mm	DSCAZ5520HHCTS
	3.0mm		DSCAZ5530HHCTS
	4.0mm		DSCAZ5540HHCTS
	5.0mm		DSCAZ5550HHCTS

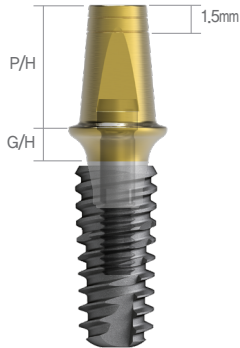


※ Set Code(S) : Abutment + Abutment Screw[2DSAS]

Abutment Diameter	G/H	P/H	Code No.
Ø6.5	2.0mm	5.5mm	DSCAZ6520HHCTS
	3.0mm		DSCAZ6530HHCTS
	4.0mm		DSCAZ6540HHCTS
	5.0mm		DSCAZ6550HHCTS

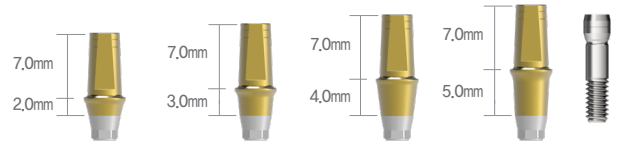


※ Set Code(S) : Abutment + Abutment Screw[2DSAS]



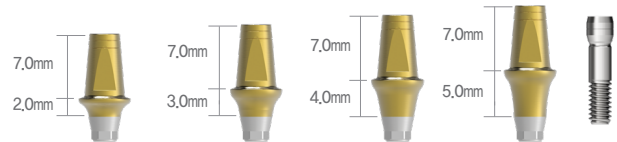
DSCAZ55207HHCTS + DSSFR4510

Abutment Diameter	G/H	P/H	Code No.
Ø4.5	2.0mm	7.0mm	DSCAZ45207HHCTS
	3.0mm		DSCAZ45307HHCTS
	4.0mm		DSCAZ45407HHCTS
	5.0mm		DSCAZ45507HHCTS



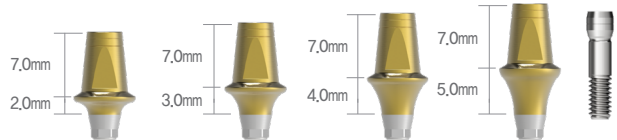
※ Set Code(S) : Abutment + Abutment Screw[2DSAS]

Abutment Diameter	G/H	P/H	Code No.
Ø5.5	2.0mm	7.0mm	DSCAZ55207HHCTS
	3.0mm		DSCAZ55307HHCTS
	4.0mm		DSCAZ55407HHCTS
	5.0mm		DSCAZ55507HHCTS



※ Set Code(S) : Abutment + Abutment Screw[2DSAS]

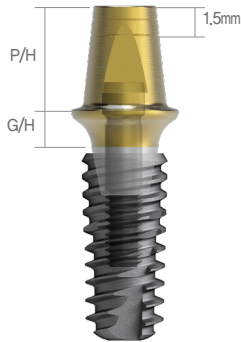
Abutment Diameter	G/H	P/H	Code No.
Ø6.5	2.0mm	7.0mm	DSCAZ65207HHCTS
	3.0mm		DSCAZ65307HHCTS
	4.0mm		DSCAZ65407HHCTS
	5.0mm		DSCAZ65507HHCTS



※ Set Code(S) : Abutment + Abutment Screw[2DSAS]

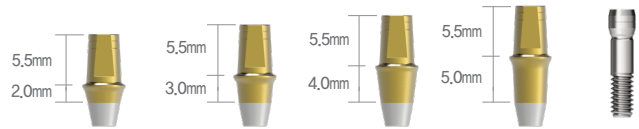
Couple Abutment *S-LINE* ABUTMENT

Regular / Wide [N-Hex] Recommended torque – Regular, wide size : 30Ncm



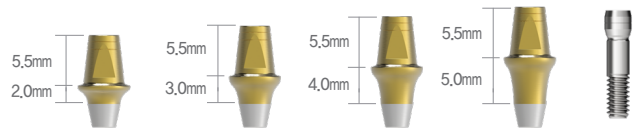
DSCAZ5520NHCTS + DSSFR4510

Abutment Diameter	G/H	P/H	Code No.
Ø4.5	2.0mm	5.5mm	DSCAZ4520NHCTS
	3.0mm		DSCAZ4530NHCTS
	4.0mm		DSCAZ4540NHCTS
	5.0mm		DSCAZ4550NHCTS



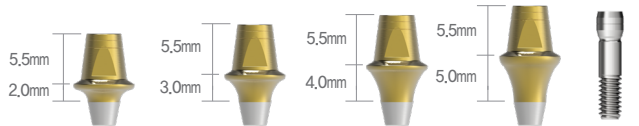
※ Set Code(S) : Abutment + Abutment Screw[2DSAS]

Abutment Diameter	G/H	P/H	Code No.
Ø5.5	2.0mm	5.5mm	DSCAZ5520NHCTS
	3.0mm		DSCAZ5530NHCTS
	4.0mm		DSCAZ5540NHCTS
	5.0mm		DSCAZ5550NHCTS

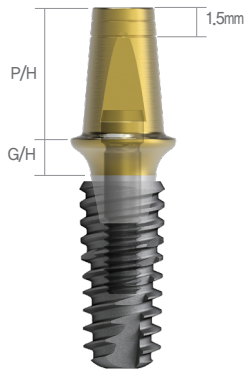


※ Set Code(S) : Abutment + Abutment Screw[2DSAS]

Abutment Diameter	G/H	P/H	Code No.
Ø6.5	2.0mm	5.5mm	DSCAZ6520NHCTS
	3.0mm		DSCAZ6530NHCTS
	4.0mm		DSCAZ6540NHCTS
	5.0mm		DSCAZ6550NHCTS

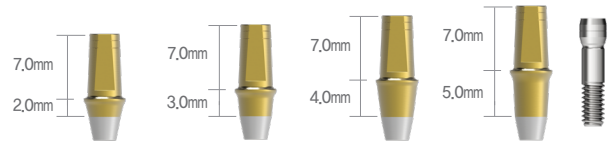


※ Set Code(S) : Abutment + Abutment Screw[2DSAS]



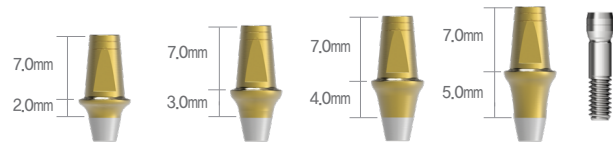
DSCAZ55207NHCTS + DSSFR4510

Abutment Diameter	G/H	P/H	Code No.
Ø4.5	2.0mm	7.0mm	DSCAZ45207NHCTS
	3.0mm		DSCAZ45307NHCTS
	4.0mm		DSCAZ45407NHCTS
	5.0mm		DSCAZ45507NHCTS



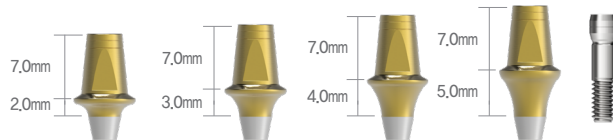
※ Set Code(S) : Abutment + Abutment Screw[2DSAS]

Abutment Diameter	G/H	P/H	Code No.
Ø5.5	2.0mm	7.0mm	DSCAZ55207NHCTS
	3.0mm		DSCAZ55307NHCTS
	4.0mm		DSCAZ55407NHCTS
	5.0mm		DSCAZ55507NHCTS



※ Set Code(S) : Abutment + Abutment Screw[2DSAS]

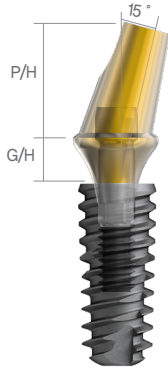
Abutment Diameter	G/H	P/H	Code No.
Ø6.5	2.0mm	7.0mm	DSCAZ65207NHCTS
	3.0mm		DSCAZ65307NHCTS
	4.0mm		DSCAZ65407NHCTS
	5.0mm		DSCAZ65507NHCTS



※ Set Code(S) : Abutment + Abutment Screw[2DSAS]

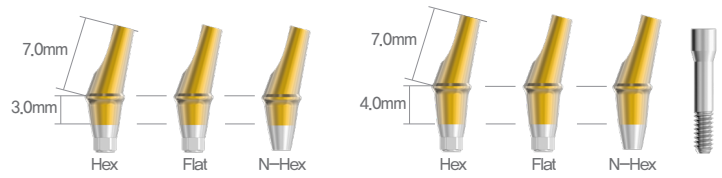
Angled Abutment **S-LINE** ABUTMENT

Mini [15°] Recommended torque – Mini size : 30Ncm



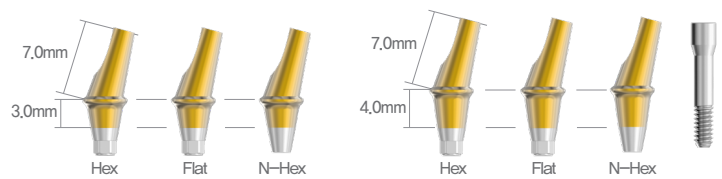
DSAAZ551527HCTS + DSSFR4010

Abutment Diameter	Angle	G/H	Type	Code No.
Ø4.0	15°	3.0mm	Hex	DSAMZ401537HTS
			Flat	DSAMZ401537FTS
			N-Hex	DSAMZ401537NTS
		4.0mm	Hex	DSAMZ401547HTS
Flat	DSAMZ401547FTS			
N-Hex	DSAMZ401547NTS			



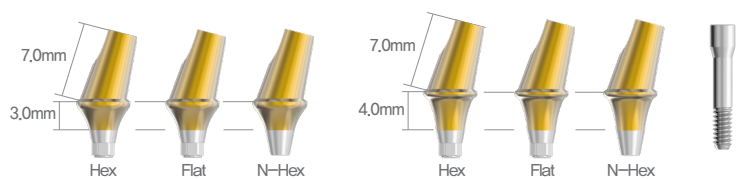
※ Set Code(S) : Abutment + Abutment Screw[2DSASM]

Abutment Diameter	Angle	G/H	Type	Code No.
Ø4.5	15°	3.0mm	Hex	DSAMZ451537HTS
			Flat	DSAMZ451537FTS
			N-Hex	DSAMZ451537NTS
		4.0mm	Hex	DSAMZ451547HTS
Flat	DSAMZ451547FTS			
N-Hex	DSAMZ451547NTS			



※ Set Code(S) : Abutment + Abutment Screw[2DSASM]

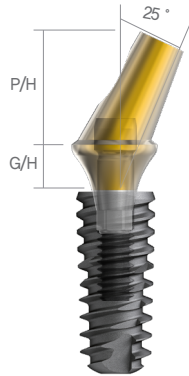
Abutment Diameter	Angle	G/H	Type	Code No.
Ø5.5	15°	3.0mm	Hex	DSAMZ551537HTS
			Flat	DSAMZ551537FTS
			N-Hex	DSAMZ551537NTS
		4.0mm	Hex	DSAMZ551547HTS
Flat	DSAMZ551547FTS			
N-Hex	DSAMZ551547NTS			



※ Set Code(S) : Abutment + Abutment Screw[2DSASM]

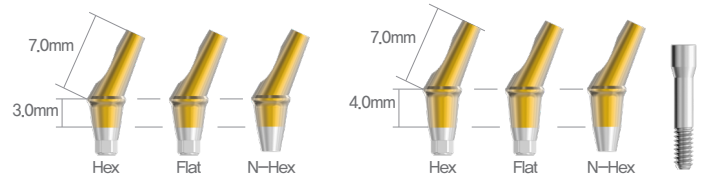
Angled Abutment

Mini [25°] Recommended torque – Mini size : 30Ncm



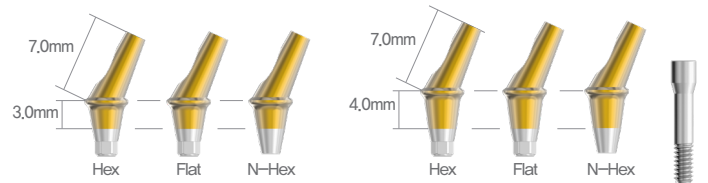
DSAAZ552527HCTS + DSSFR4010

Abutment Diameter	Angle	G/H	Type	Code No.
Ø4.0	25°	3.0mm	Hex	DSAMZ402537HTS
			Flat	DSAMZ402537FTS
			N-Hex	DSAMZ402537NTS
		4.0mm	Hex	DSAMZ402547HTS
Flat	DSAMZ402547FTS			
N-Hex	DSAMZ402547NTS			



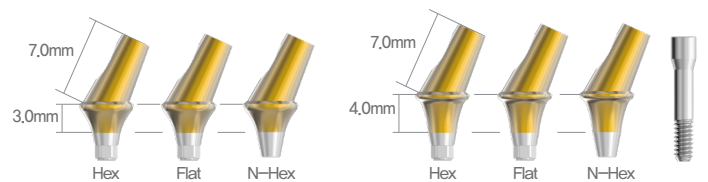
※ Set Code(S) : Abutment + Abutment Screw[2DSASM]

Abutment Diameter	Angle	G/H	Type	Code No.
Ø4.5	25°	3.0mm	Hex	DSAMZ452537HTS
			Flat	DSAMZ452537FTS
			N-Hex	DSAMZ452537NTS
		4.0mm	Hex	DSAMZ452547HTS
Flat	DSAMZ452547FTS			
N-Hex	DSAMZ452547NTS			



※ Set Code(S) : Abutment + Abutment Screw[2DSASM]

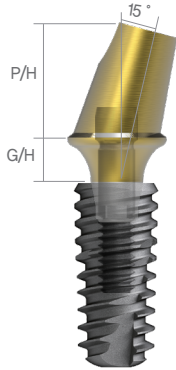
Abutment Diameter	Angle	G/H	Type	Code No.
Ø5.5	25°	3.0mm	Hex	DSAMZ552537HTS
			Flat	DSAMZ552537FTS
			N-Hex	DSAMZ552537NTS
		4.0mm	Hex	DSAMZ552547HTS
Flat	DSAMZ552547FTS			
N-Hex	DSAMZ552547NTS			



※ Set Code(S) : Abutment + Abutment Screw[2DSASM]

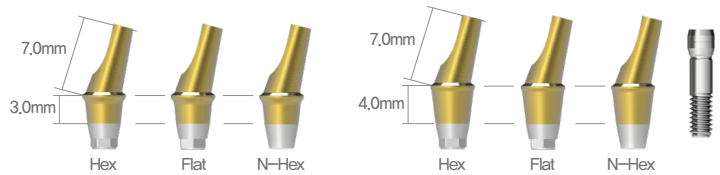
Angled Abutment **S-LINE** ABUTMENT

Regular / Wide [15°] Recommended torque – Regular, wide size : 30Ncm



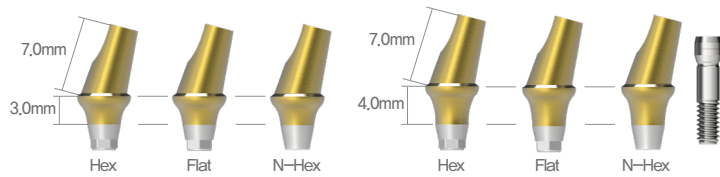
DSAAZ551527HCTS + DSSFR4510

Abutment Diameter	Angle	G/H	Type	Code No.
Ø4.5	15°	3.0mm	Hex Flat N-Hex	DSAAZ451537HCTS DSAAZ451537FHCTS DSAAZ451537NHCTS
		4.0mm	Hex Flat N-Hex	DSAAZ451547HCTS DSAAZ451547FHCTS DSAAZ451547NHCTS



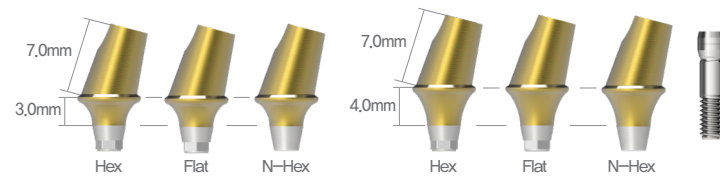
※ Set Code(S) : Abutment + Abutment Screw[2DSAS]

Abutment Diameter	Angle	G/H	Type	Code No.
Ø5.5	15°	3.0mm	Hex Flat N-Hex	DSAAZ551537HCTS DSAAZ551537FHCTS DSAAZ551537NHCTS
		4.0mm	Hex Flat N-Hex	DSAAZ551547HCTS DSAAZ551547FHCTS DSAAZ551547NHCTS



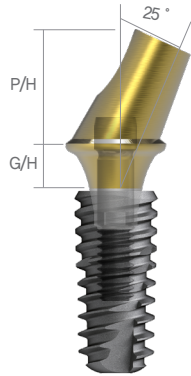
※ Set Code(S) : Abutment + Abutment Screw[2DSAS]

Abutment Diameter	Angle	G/H	Type	Code No.
Ø6.5	15°	3.0mm	Hex Flat N-Hex	DSAAZ651537HCTS DSAAZ651537FHCTS DSAAZ651537NHCTS
		4.0mm	Hex Flat N-Hex	DSAAZ651547HCTS DSAAZ651547FHCTS DSAAZ651547NHCTS



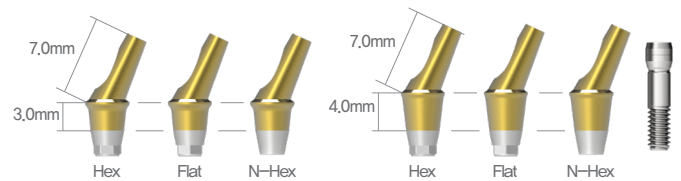
※ Set Code(S) : Abutment + Abutment Screw[2DSAS]

Regular / Wide [25°] Recommended torque – Regular, wide size : 30Ncm



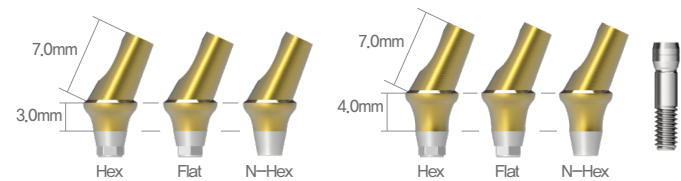
DSAAZ552527HCTS + DSSFR4510

Abutment Diameter	Angle	G/H	Type	Code No.
Ø4.5	25°	3.0mm	Hex Flat N-Hex	DSAAZ452537HCTS DSAAZ452537FHCTS DSAAZ452537NHCTS
		4.0mm	Hex Flat N-Hex	DSAAZ452547HCTS DSAAZ452547FHCTS DSAAZ452547NHCTS



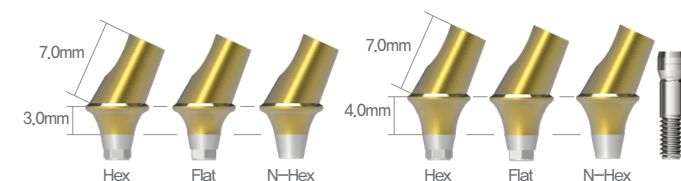
※ Set Code(S) : Abutment + Abutment Screw[2DSAS]

Abutment Diameter	Angle	G/H	Type	Code No.
Ø5.5	25°	3.0mm	Hex Flat N-Hex	DSAAZ552537HCTS DSAAZ552537FHCTS DSAAZ552537NHCTS
		4.0mm	Hex Flat N-Hex	DSAAZ552547HCTS DSAAZ552547FHCTS DSAAZ552547NHCTS



※ Set Code(S) : Abutment + Abutment Screw[2DSAS]

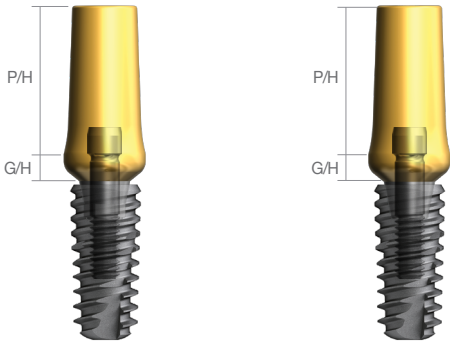
Abutment Diameter	Angle	G/H	Type	Code No.
Ø6.5	25°	3.0mm	Hex Flat N-Hex	DSAAZ652537HCTS DSAAZ652537FHCTS DSAAZ652537NHCTS
		4.0mm	Hex Flat N-Hex	DSAAZ652547HCTS DSAAZ652547FHCTS DSAAZ652547NHCTS



※ Set Code(S) : Abutment + Abutment Screw[2DSAS]

FreeMill Abutment

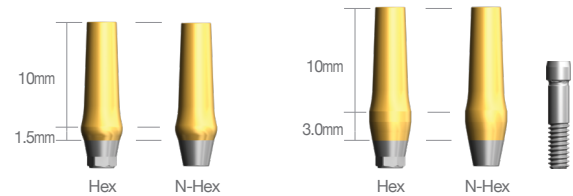
Regular / Wide [Hex / N-Hex] Recommended torque – Regular, wide size : 30Ncm



DSFMA5520HHCTS + DSSFR4510 DSFMA5520NHCTS + DSSFR4510

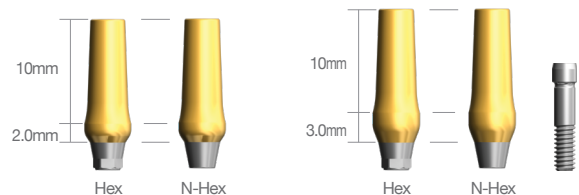
Abutment Diameter	G/H	Type	Code No.
Ø4.0	1.5mm	Hex	DSFMA4015HHCTS
		N-Hex	DSFMA4015NHCTS
	3.0mm	Hex	DSFMA4030HHCTS
		N-Hex	DSFMA4030NHCTS

※ Set Code(S) : Abutment + Abutment Screw[DSAS]



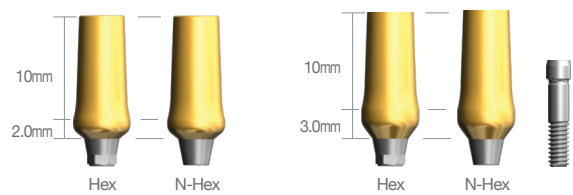
Abutment Diameter	G/H	Type	Code No.
Ø4.5	2.0mm	Hex	DSFMA4520HHCTS
		N-Hex	DSFMA4520NHCTS
	3.0mm	Hex	DSFMA4530HHCTS
		N-Hex	DSFMA4530NHCTS

※ Set Code(S) : Abutment + Abutment Screw[DSAS]



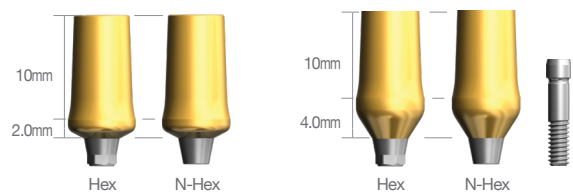
Abutment Diameter	G/H	Type	Code No.
Ø5.5	2.0mm	Hex	DSFMA5520HHCTS
		N-Hex	DSFMA5520NHCTS
	3.0mm	Hex	DSFMA5530HHCTS
		N-Hex	DSFMA5530NHCTS

※ Set Code(S) : Abutment + Abutment Screw[DSAS]



Abutment Diameter	G/H	Type	Code No.
Ø6.5	2.0mm	Hex	DSFMA6520HHCTS
		N-Hex	DSFMA6520NHCTS
	4.0mm	Hex	DSFMA6540HHCTS
		N-Hex	DSFMA6540NHCTS

※ Set Code(S) : Abutment + Abutment Screw[DSAS]

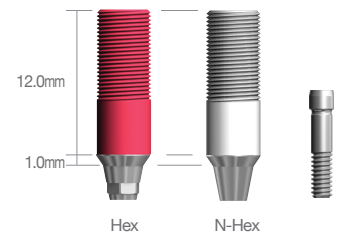


Gold UCLA

Regular / Wide Recommended torque – Regular, wide size : 30Ncm

Abutment Diameter	Type	Code No.
Ø4.5	Hex	DSGCHS
	N-Hex	DSGCNS

※ Set Code(S) : Abutment + Abutment Screw[DSAS]



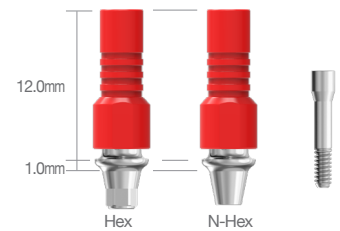
CCM UCLA

Mini Recommended torque – Mini size : 30Ncm

Abutment Diameter	Type	Code No.
Ø4.0	Hex	DSCUAH401M
	N-Hex	DSCUAN401M

※ Set Code(S) : Abutment + Abutment Screw[2DSASM]

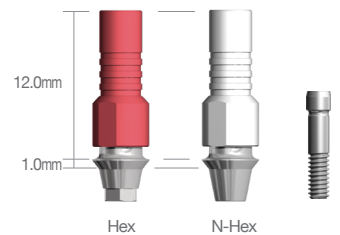
* Coming Soon



Regular / Wide Recommended torque – Regular, wide size : 30Ncm

Abutment Diameter	Type	Code No.
Ø4.5	Hex	DSCUAHS
	N-Hex	DSCUANS

※ Set Code(S) : Abutment + Abutment Screw[DSAS]



Plastic UCLA

Mini

Abutment Diameter	Type	Code No.
Ø4.0	Hex	DSPCHM
	N-Hex	DSPCNM

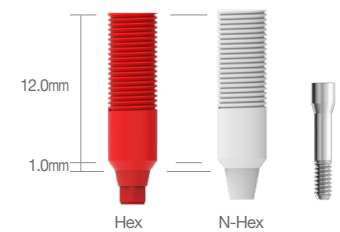
※ Set Code(S) : Abutment + Abutment Screw[2DSASM]

* Coming Soon

Regular / Wide

Abutment Diameter	Type	Code No.
Ø4.5	Hex	DSPCHS
	N-Hex	DSPCNS

※ Set Code(S) : Abutment + Abutment Screw[DSAS]



Abutment Screw

Type	Code No.
Mini	2DSASM
Regular / Wide	DSAS / 2DSAS(S-Line)

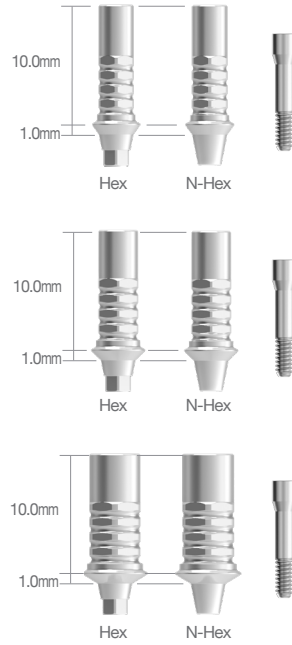


Titanium Temporary Abutment

Mini Recommended torque – Mini size : 30Ncm

Abutment Diameter	Cuff	Type	Code No.
Ø4.0	1mm	Hex N-Hex	DSTAM40HS DSTAM40NS
Ø4.5	1mm	Hex N-Hex	DSTAM45HS DSTAM45NS
Ø5.5	1mm	Hex N-Hex	DSTAM55HS DSTAM55NS

※ Set Code(S) : Abutment + Abutment Screw[2DSASM]



Regular / Wide Recommended torque – Regular, wide size : 30Ncm

Abutment Diameter	Cuff	Type	Code No.
Ø4.5	1mm	Hex N-Hex	DSTA45HS DSTA45NS
Ø5.5	1mm	Hex N-Hex	DSTA55HS DSTA55NS
Ø6.5	1mm	Hex N-Hex	DSTA65HS DSTA65NS

※ Set Code(S) : Abutment + Abutment Screw[DSAS]

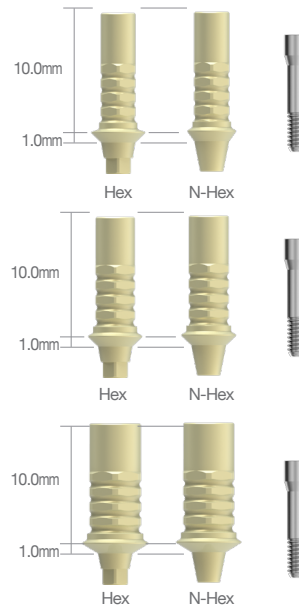


PEEK Temporary Abutment

Mini Recommended torque – Mini size : 30Ncm

Abutment Diameter	Cuff	Type	Code No.
Ø4.0	1mm	Hex N-Hex	DSPTM40HS DSPTM40NS
Ø4.5	1mm	Hex N-Hex	DSPTM45HS DSPTM45NS
Ø5.5	1mm	Hex N-Hex	DSPTM55HS DSPTM55NS

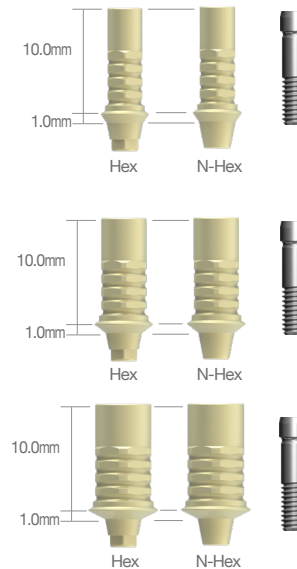
※ Set Code(S) : Abutment + Abutment Screw[2DSASM]



Regular / Wide Recommended torque – Regular, wide size : 30Ncm

Abutment Diameter	Cuff	Type	Code No.
Ø4.5	1mm	Hex N-Hex	DSPT45HS DSPT45NS
Ø5.5	1mm	Hex N-Hex	DSPT55HS DSPT55NS
Ø6.5	1mm	Hex N-Hex	DSTA65HS DSTA65NS

※ Set Code(S) : Abutment + Abutment Screw[DSAS]



Lab Analog

Mini

Abutment Diameter	Code No.
Ø4.3	DSCLAM



Regular / Wide

Abutment Diameter	Code No.
Ø4.3	DSCLA

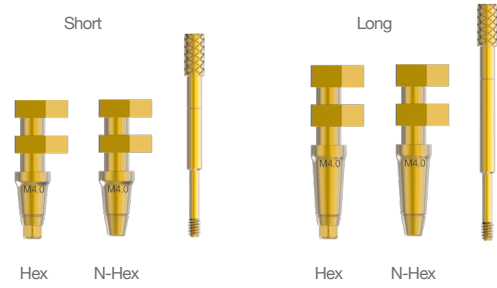


Pick-Up Impression Coping *S-LINE* Mini



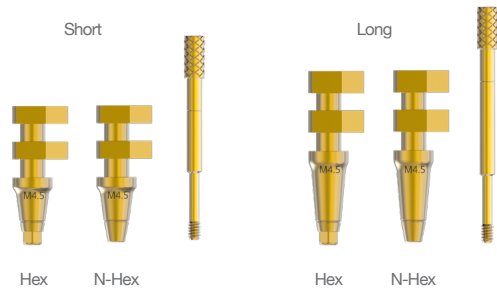
Abutment Diameter	Type	Height	Code No.
Ø4.0	Hex	Short	DSIHMZ40SS
		Long	DSIHMZ40LS
	N-Hex	Short	DSINMZ40SS
		Long	DSINMZ40LS

※ Set Code(S) : Impression Body + Pin
[Short - DSGPZS15 / Long - DSGPZS19]



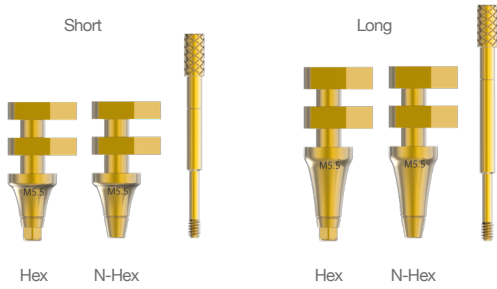
Abutment Diameter	Type	Height	Code No.
Ø4.5	Hex	Short	DSIHMZ45SS
		Long	DSIHMZ45LS
	N-Hex	Short	DSINMZ45SS
		Long	DSINMZ45LS

※ Set Code(S) : Impression Body + Pin
[Short - DSGPZS15 / Long - DSGPZS19]



Abutment Diameter	Type	Height	Code No.
Ø5.5	Hex	Short	DSIHMZ55SS
		Long	DSIHMZ55LS
	N-Hex	Short	DSINMZ55SS
		Long	DSINMZ55LS

※ Set Code(S) : Impression Body + Pin
[Short - DSGPZS15 / Long - DSGPZS19]



Transfer Impression Coping **S-LINE** Mini

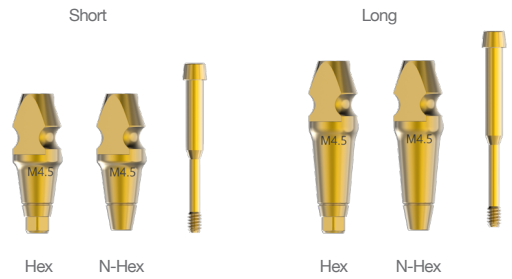
Abutment Diameter	Type	Height	Code No.
Ø4.0	Hex	Short	DSITHMZ40SS
		Long	DSITHMZ40LS
	N-Hex	Short	DSITNMZ40SS
		Long	DSITNMZ40LS

※ Set Code(S) : Impression Body + Pin
[Short - DSTSSZ / Long - DSTSLZ]



Abutment Diameter	Type	Height	Code No.
Ø4.5	Hex	Short	DSITHMZ45SS
		Long	DSITHMZ45LS
	N-Hex	Short	DSITNMZ45SS
		Long	DSITNMZ45LS

※ Set Code(S) : Impression Body + Pin
[Short - DSGPZS15 / Long - DSGPZS19]



Abutment Diameter	Type	Height	Code No.
Ø5.5	Hex	Short	DSITHMZ55SS
		Long	DSITHMZ55LS
	N-Hex	Short	DSITNMZ55SS
		Long	DSITNMZ55LS

※ Set Code(S) : Impression Body + Pin
[Short - DSGPZS15 / Long - DSGPZS19]



Pick-Up Impression Coping

Regular / Wide

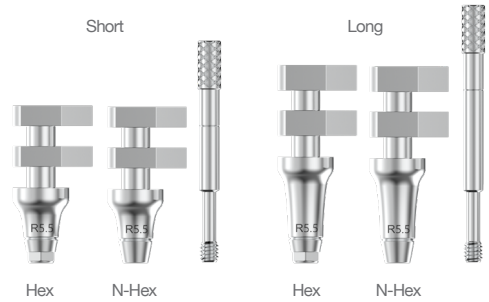
Abutment Diameter	Type	Height	Code No.
Ø4.5	Hex	Short	DSIHZ45SS
		Long	DSIHZ45LS
	N-Hex	Short	DSINZ45SS
		Long	DSINZ45LS

※ Set Code(S) : Impression Body + Pin
 [Short - DSGPZ15 / Long - DSGPZ19]



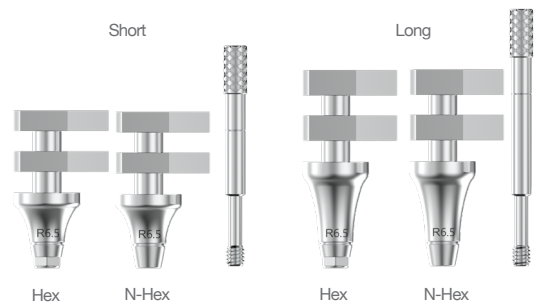
Abutment Diameter	Type	Height	Code No.
Ø5.5	Hex	Short	DSIHZ55SS
		Long	DSIHZ55LS
	N-Hex	Short	DSINZ55SS
		Long	DSINZ55LS

※ Set Code(S) : Impression Body + Pin
 [Short - DSGPZ15 / Long - DSGPZ19]



Abutment Diameter	Type	Height	Code No.
Ø6.5	Hex	Short	DSIHZ65SS
		Long	DSIHZ65LS
	N-Hex	Short	DSINZ65SS
		Long	DSINZ65LS

※ Set Code(S) : Impression Body + Pin
 [Short - DSGPZ15 / Long - DSGPZ19]



Transfer Impression Coping *S-LINE* Regular / Wide



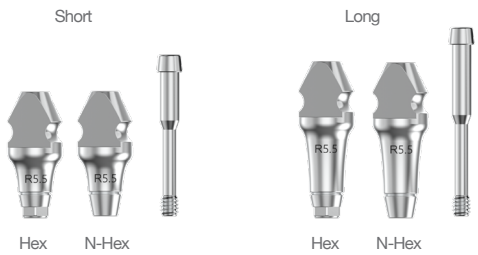
Abutment Diameter	Type	Height	Code No.
Ø4.5	Hex	Short	DSITHZ45SS
		Long	DSITHZ45LS
	N-Hex	Short	DSITNZ45SS
		Long	DSITNZ45LS

※ Set Code(S) : Impression Body + Pin
[Short - DSTSZ / Long - DSTLZ]



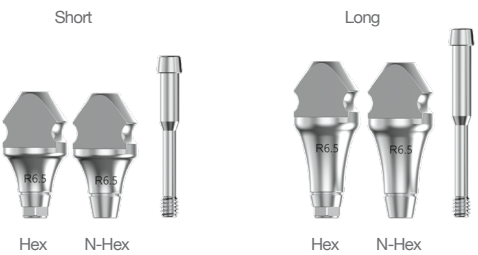
Abutment Diameter	Type	Height	Code No.
Ø5.5	Hex	Short	DSITHZ55SS
		Long	DSITHZ55LS
	N-Hex	Short	DSITNZ55SS
		Long	DSITNZ55LS

※ Set Code(S) : Impression Body + Pin
[Short - DSTSZ / Long - DSTLZ]



Abutment Diameter	Type	Height	Code No.
Ø6.5	Hex	Short	DSITHZ65SS
		Long	DSITHZ65LS
	N-Hex	Short	DSITNZ65SS
		Long	DSITNZ65LS

※ Set Code(S) : Impression Body + Pin
[Short - DSTSZ / Long - DSTLZ]



Multi Use Coping

Abutment Diameter	G/H	IH	Code No.
Ø4.5	2mm	4mm	DSMUC4524S
	3mm		DSMUC4534S
	4mm		DSMUC4544S
	6mm		DSMUC4564S
	8mm		DSMUC4584S

※Set code : Multi Use Coping + Screw
 * G/H : Gingival Height * IH : Impression Height



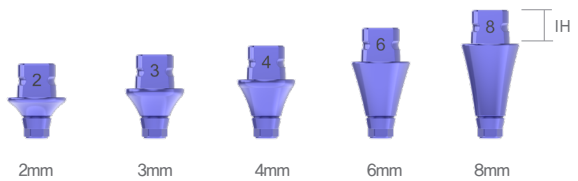
Abutment Diameter	G/H	IH	Code No.
Ø5.5	2mm	4mm	DSMUC5524S
	3mm		DSMUC5534S
	4mm		DSMUC5544S
	6mm		DSMUC5564S
	8mm		DSMUC5584S

※Set code : Multi Use Coping + Screw
 * G/H : Gingival Height * IH : Impression Height



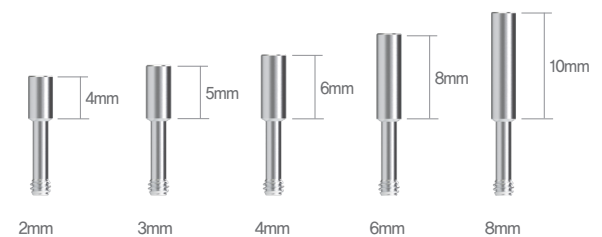
Abutment Diameter	G/H	IH	Code No.
Ø6.5	2mm	4mm	DSMUC6524S
	3mm		DSMUC6534S
	4mm		DSMUC6544S
	6mm		DSMUC6564S
	8mm		DSMUC6584S

※Set code : Multi Use Coping + Screw
 * G/H : Gingival Height * IH : Impression Height



Multi Use Coping Screw

G/H	Code No.
2mm	DSHHS02
3mm	DSHHS03
4mm	DSHHS04
6mm	DSHHS06
8mm	DSHHS08



Impression Cap

Code No.
DSHITIC

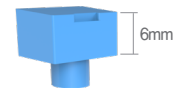
※ 1 Set = 5EA



Bite Cap

Code No.
DSHIBCS
DSHIBCL

※ 1 Set = 5EA



Healing Cap

Abutment Diameter	Code No.
Ø4.5/Ø5.5/Ø6.5	DSHIHC45
	DSHIHC55
	DSHIHC65



Multi Use Holder

Code No.
DHIHS
DHIHL



Short

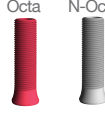








Long

Prosthetic Flow Diagrams for SQ Sub Octa System

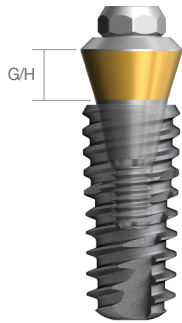
Abutment Level Impression / Screw Restoration

M Mini Type

Description	Flow	Tool
Screw		 1.25 Hex Driver
Cylinder	   <p>Gold Cylinder CCM Cylinder Plastic Cylinder</p>	
Lab Analog		
Impression Coping	  <p>Pick-up Transfer</p>	 1.25 Hex Driver
Sub Octa Abutment		 Octa Abutment Driver
	  <p>Cover Screw Healing Abutment</p>	 1.25 Hex Driver
SQ Fixture	  <p>SQ Ø3.5~4.0 SQ Ø4.5~8.0</p>	  <p>No-Mount Driver Ratchet Driver</p>

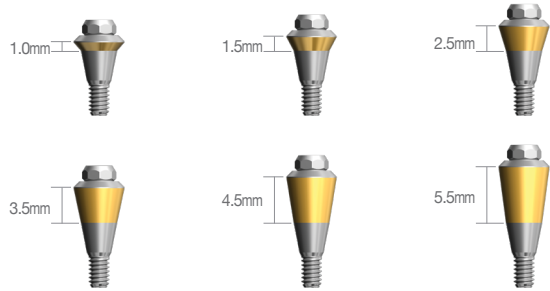
Sub Octa Abutment

Regular / Wide Recommended torque – Regular, wide size : 30Ncm



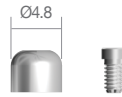
DSOA482PCT + DSSFR4510

Abutment Diameter	G/H	Code No.
Ø4.8	1.0mm	DSOA480PCT
	1.5mm	DSOA481PCT
	2.5mm	DSOA482PCT
	3.5mm	DSOA483PCT
	4.5mm	DSOA484PCT
	5.5mm	DSOA485PCT



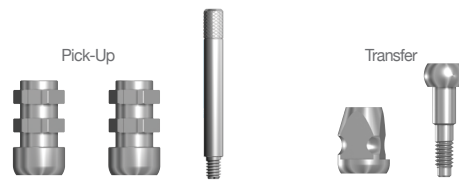
Octa Healing Cap

Abutment Diameter	Code No.
Ø4.8	DIOHC



Impression Coping

Abutment Diameter	Type	Code No.
Ø4.8	Pick-Up	DIOIOS DIOINS
	Transfer	DIOTIS



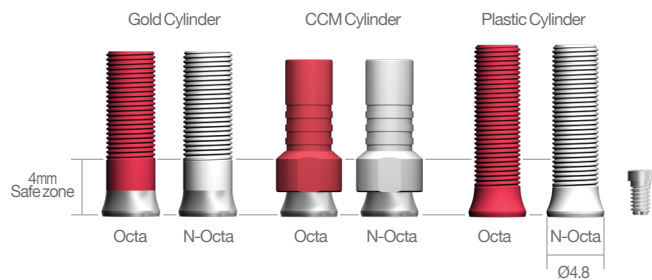
Lab Analog

Abutment Diameter	Code No.
Ø4.8	DIOLA



Cylinder

Abutment Diameter	Type	Angle	Code No.
Ø4.8	Gold	Octa N-Octa	DIOGCOS DIOGCNS
	CCM	Octa N-Octa	DIOCC48OS DIOCC48NS
	Plastic	Octa N-Octa	DIOPOS DIO PNS

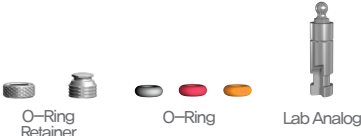

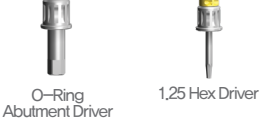


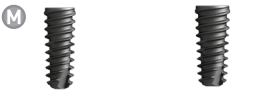
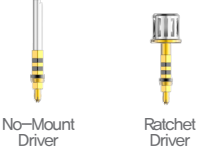


※ Set Code(S) : Abutment + Abutment Screw[DIOACS]



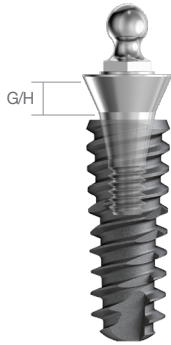
Prosthetic Flow Diagrams for SQ Overdenture system

M Mini Type

Description	Flow	Tool
Attachment	 <p>O-Ring Retainer O-Ring Lab Analog</p>	
Overdenture	 <p>O-Ring Abutment</p>	 <p>O-Ring Abutment Driver 1.25 Hex Driver</p>
	 <p>Cover Screw Healing Abutment</p>	 <p>1.25 Hex Driver</p>
Fixture	 <p>SQ Ø3.5~4.0 SQ Ø4.5~8.0</p>	 <p>No-Mount Driver Ratchet Driver</p>

O-Ring Abutment

Mini Recommended torque – Mini size : 30Ncm



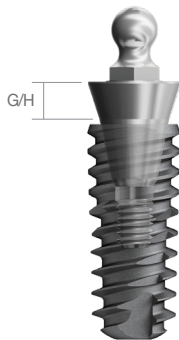
DSORAS20 + DSSFN3510

Abutment Diameter	G/H	Code No.
Ø4.0	2mm	DSORAM20
	4mm	DSAORAM40



O-Ring Abutment

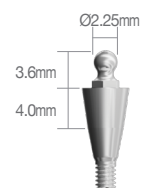
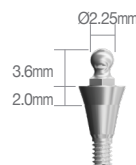
Regular / Wide Recommended torque – Regular, wide size : 30Ncm



DSORA20 + DSSFR4010

Abutment Diameter	G/H	Code No.
Ø3.4	0.5mm	DSORA00

Abutment Diameter	G/H	Code No.
Ø4.5	2mm	DSORA20
	4mm	DSORA40



O-Ring Lab Analog

Code No.
DOLA



O-Ring Retainer

Open

Code No.
DORS



4N

6N

Close

Code No.
DORCS



4N

6N

O-Ring

Abutment Color	Code No.
BLACK	DOAO100
RED	DOAO400
ORANGE	DOAO800

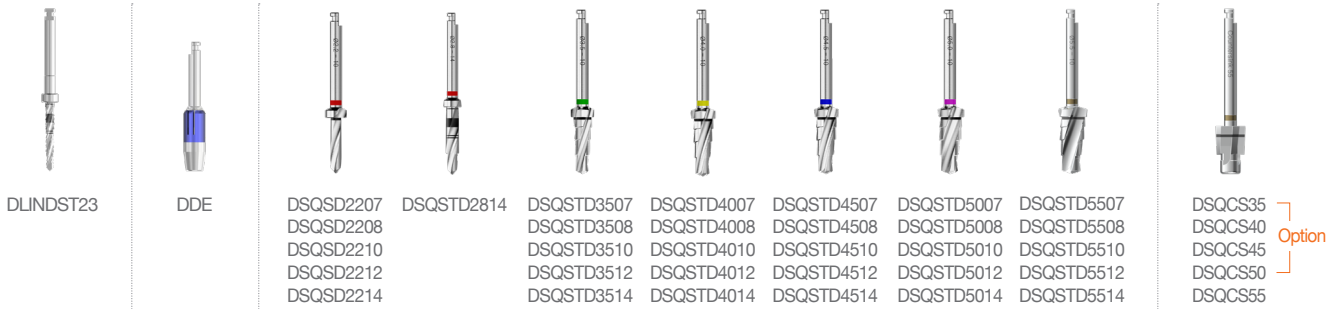


4N

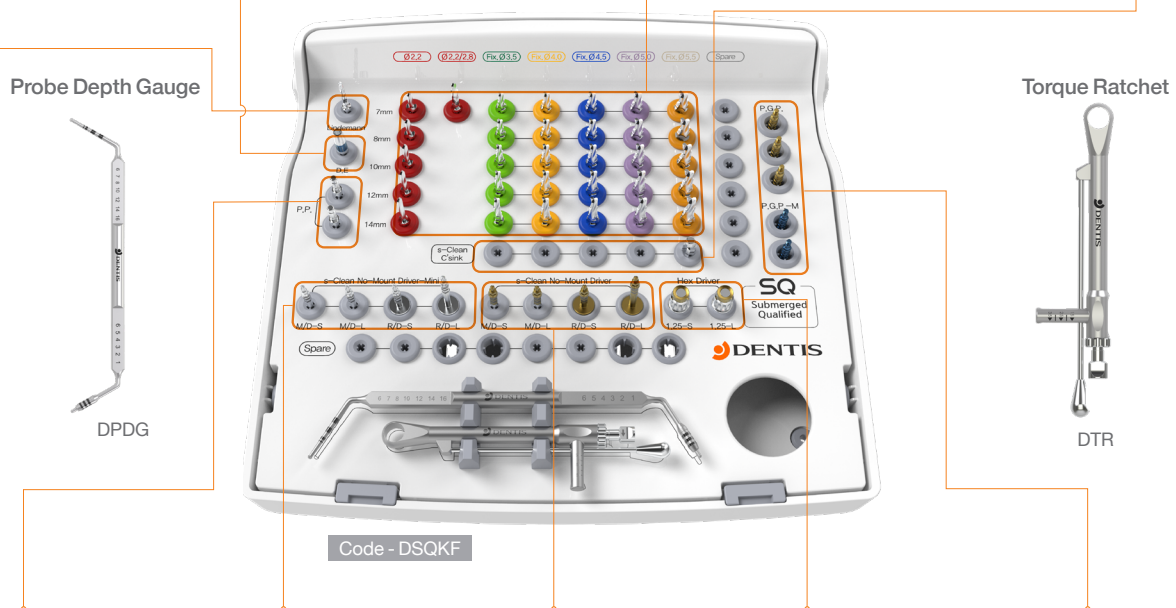
6N



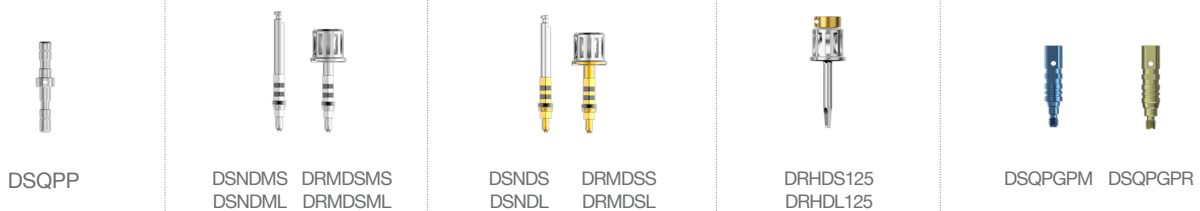
SQ Surgical Kit



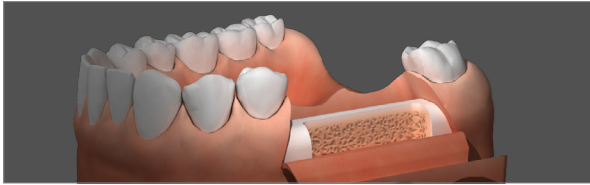
Lindemann Drill	Drill Extension	Straight / Step Drill	Countersink
-----------------	-----------------	-----------------------	-------------



SQ Parallel Pin for Drill	s-Clean No-Mount Driver Mini & Ratchet Driver Mini	s-Clean No-Mount Driver & Ratchet Driver	1.25 Hex Driver	Path Guide Pin for SQ Fixture
---------------------------	--	--	-----------------	-------------------------------

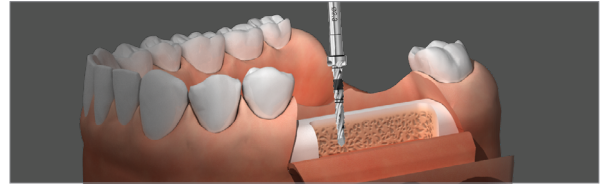


SQ Surgical Manual



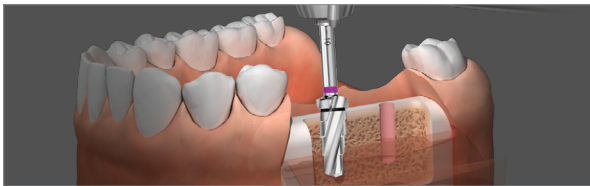
1. Incision

- Make an incision in the area where the implant will be placed.



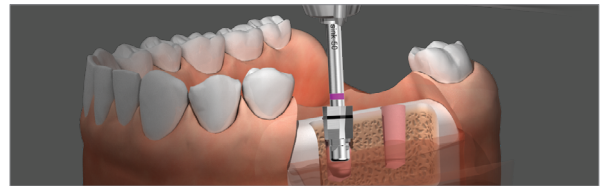
2. Lindemann Drill

- Make a guide hold for the initial drilling by using point drill.



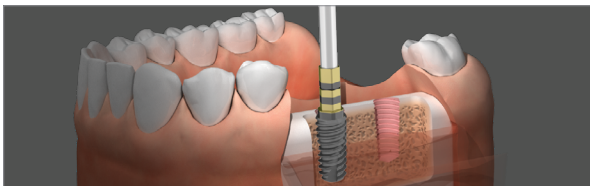
3. Straight/Step Drill

- We recommend 800~1,200RPM while drilling as well as continued drilling that reaches the bottom of the laser-marked line.
- ※ RPM can be set diversely depending on the bone density.
- Choose the appropriate drill that is equal to the length of fixture to be placed and then drilling that continues to the own stopper.



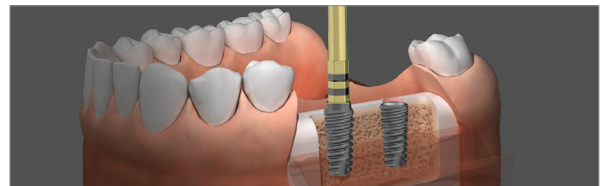
4. Countersink

- We recommend 800~1,000RPM while drilling as well as continued drilling that reaches the bottom of the laser-marked line.
- ※ RPM can be set diversely depending on the bone density.
- In case of D1–D2 bone, drill until upper line of laser marking, in case of D3–D4 bone, drill until lower line of laser marking.



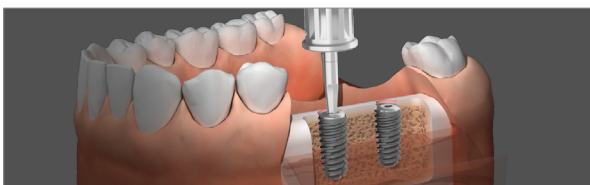
5. Fixture placement [1]

- Place the fixture with s–Clean No–Mount Driver, a component of Surgical Kit set.
- We recommend 20RPM–30Ncm/ Max 40Ncm.
- For Narrow fixtures, recommending 20RPM–20Ncm / Max 30Ncm.



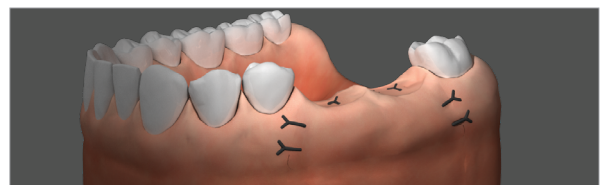
6. Fixture placement [2]

- Place the fixture with s–Clean Ratchet Driver, a component of Surgical Kit set, s–Clean Torque Ratchet connected.
- Placing that continues to the laser-marked line on the driver.
- It should be caution against too excessive torque.



7. Cover Screw Connection

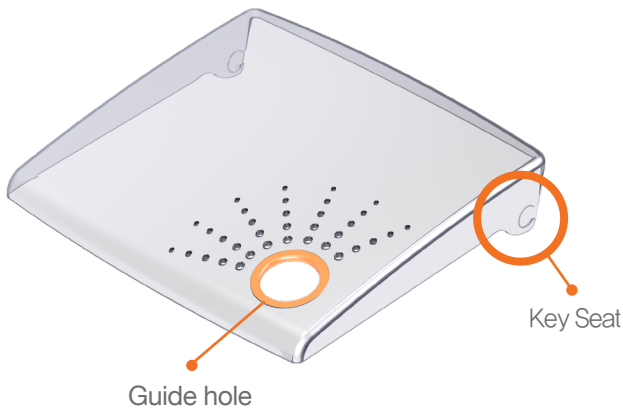
- Remove the cover screw from the Ampoule case using a 1.25 hex hand driver, and then connect the screw to the fixture.
- Recommend torque for cover screw is 5–8Ncm.



8. Suture

- After connecting the cover screw to the fixture, suture the incised gingiva.
- Make sure there is enough attached gingiva for stability.

Cover



Middle tray



Bottom



SEPARATION



Please raise the cover with finger in the guide hole.



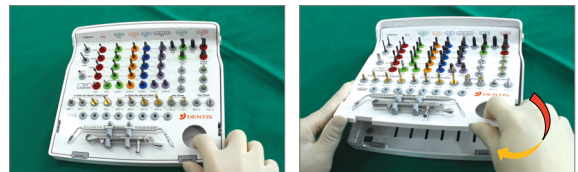
After raising the cover at a right angle, please separate it

ASSEMBLING



After raising the cover at a right angle, please assemble it with a key seat properly

REMOVAL



Please raise the middle tray with finger in the guide hole as following this arrow.

ASSEMBLING

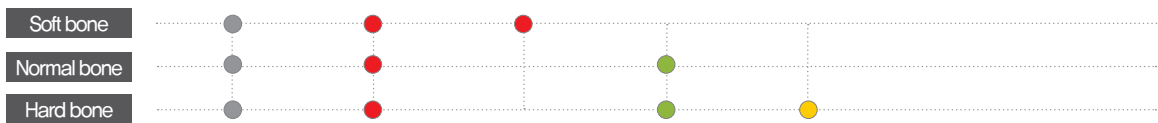
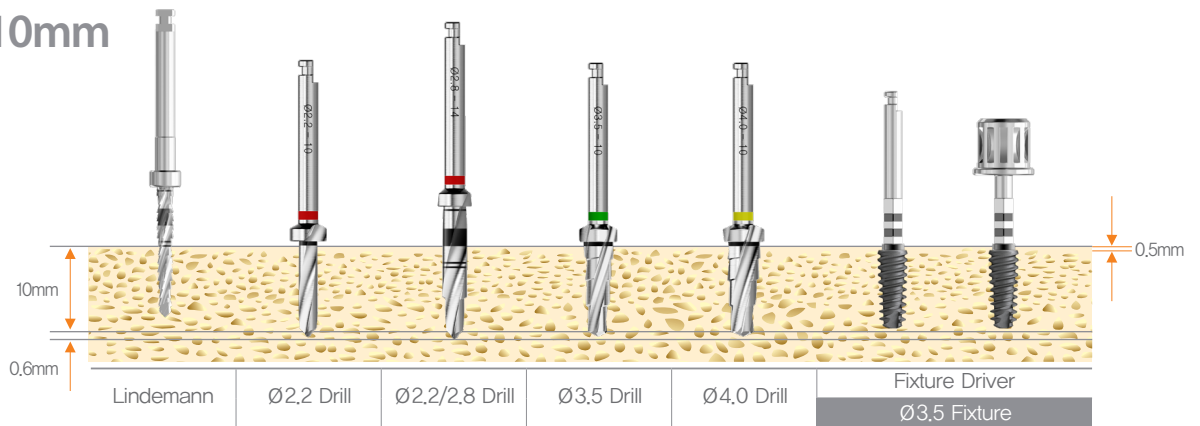


The lower part of middle tray is inserted first, and please press the upper part

SQ Drilling Sequence

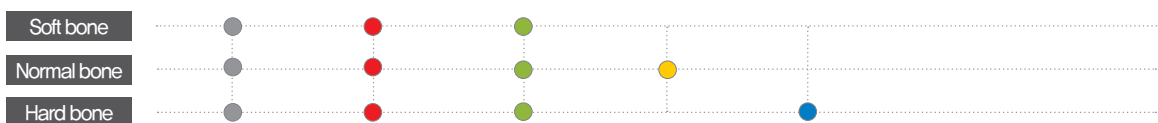
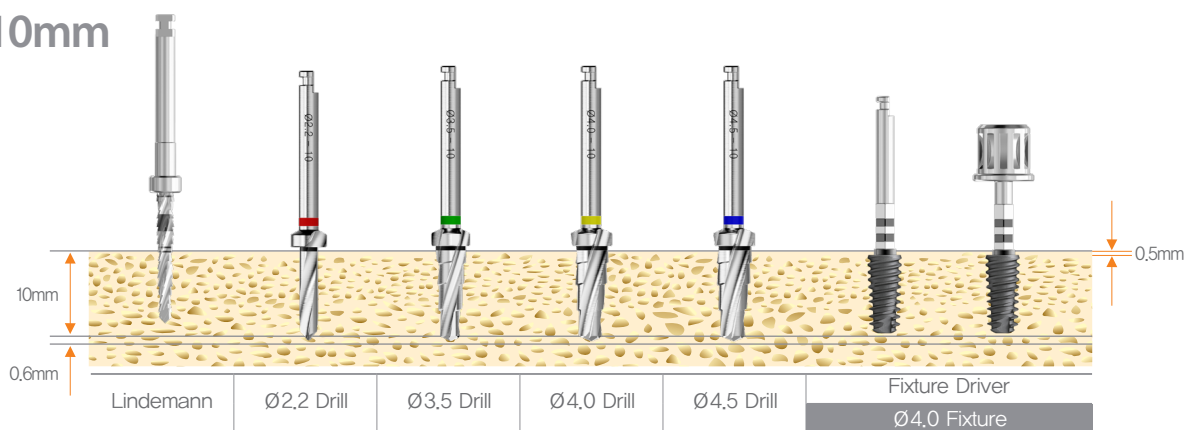
When place fixture, Drilling has to 0.5mm deeper than fixture length and place fixture 0.6mm lower than bone level.

Ø3.5 x 10mm



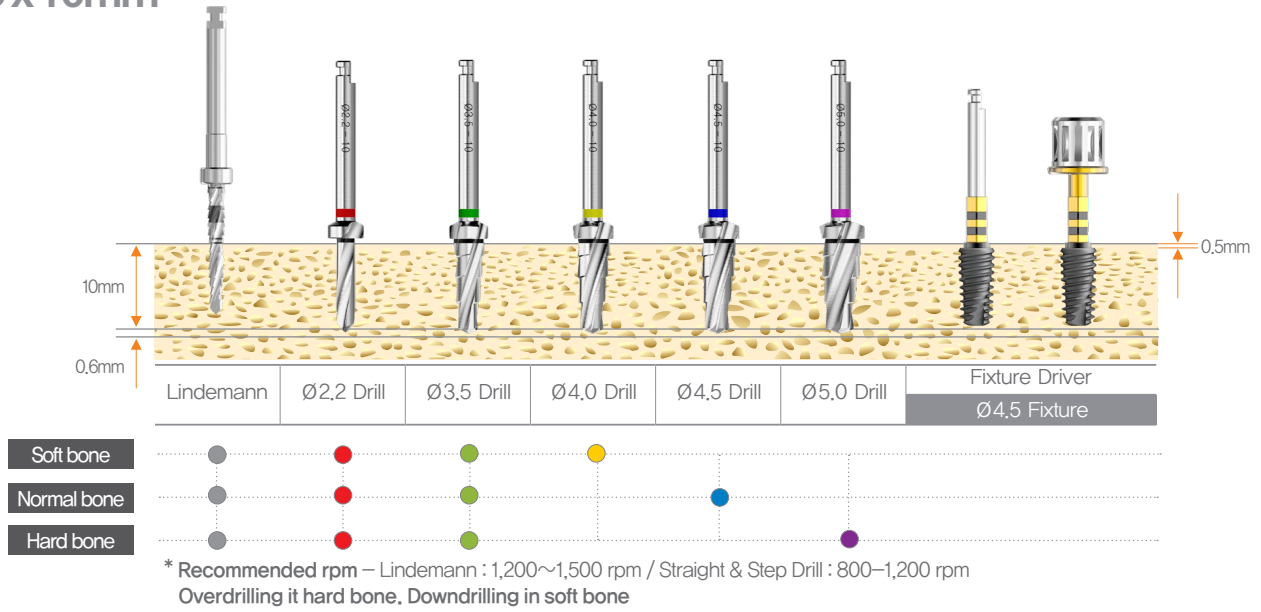
* Recommended rpm – Lindemann : 1,200~1,500 rpm / Straight & Step Drill : 800~1,200 rpm
Overdrilling it hard bone, Downdrilling in soft bone

Ø4.0 x 10mm

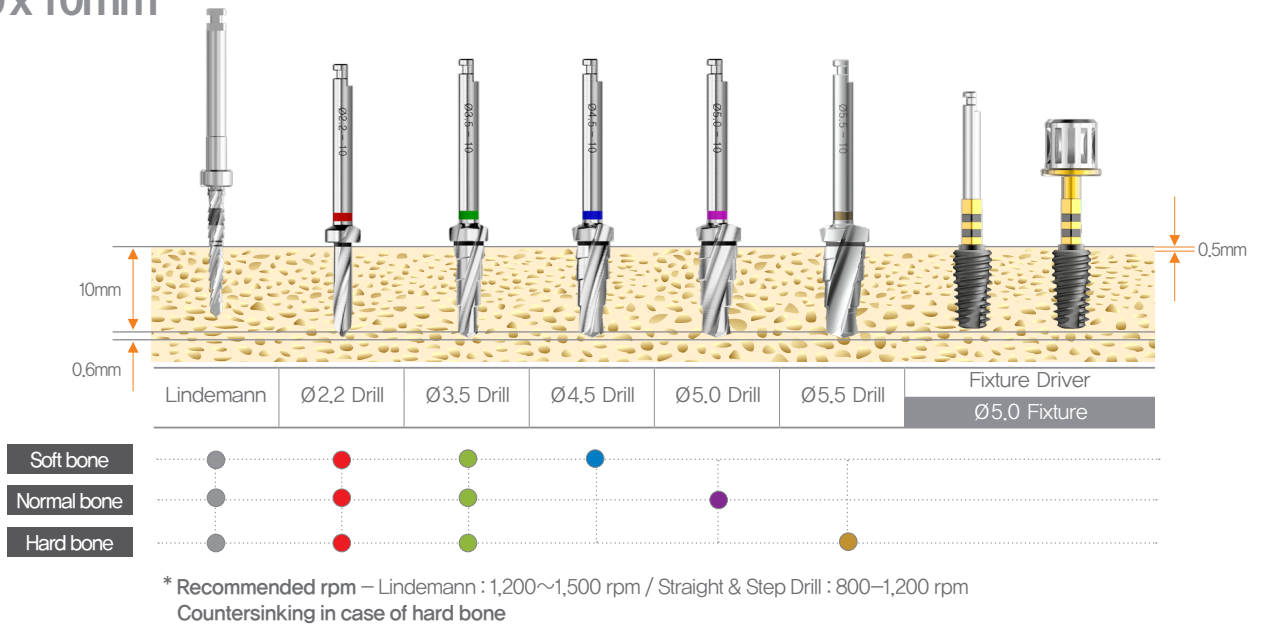


* Recommended rpm – Lindemann : 1,200~1,500 rpm / Straight & Step Drill : 800~1,200 rpm
Overdrilling it hard bone, Downdrilling in soft bone

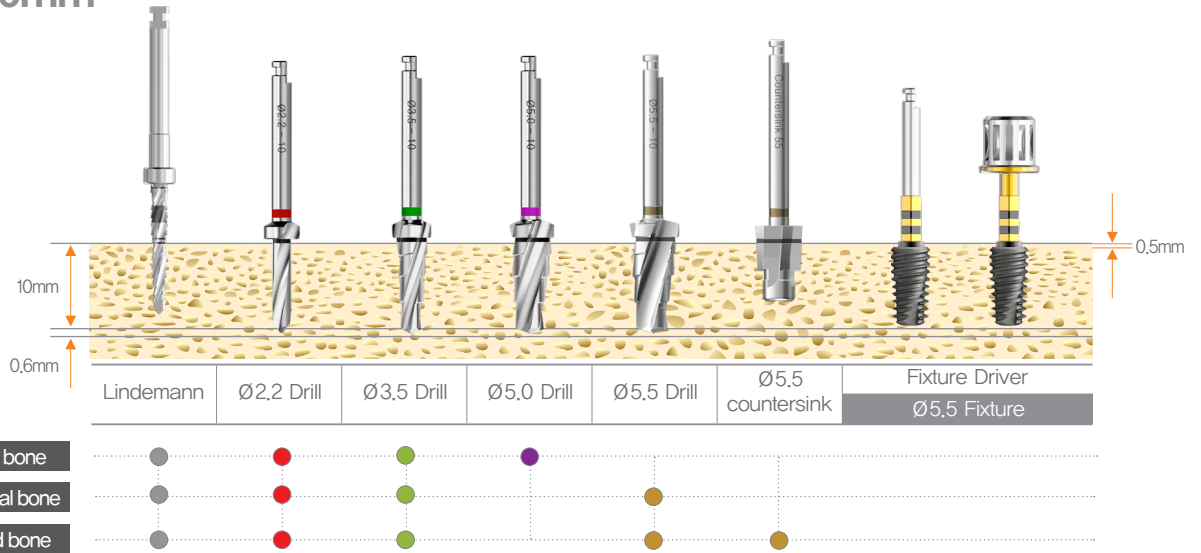
Ø4.5 x 10mm



Ø5.0 x 10mm



Ø5.5 x 10mm



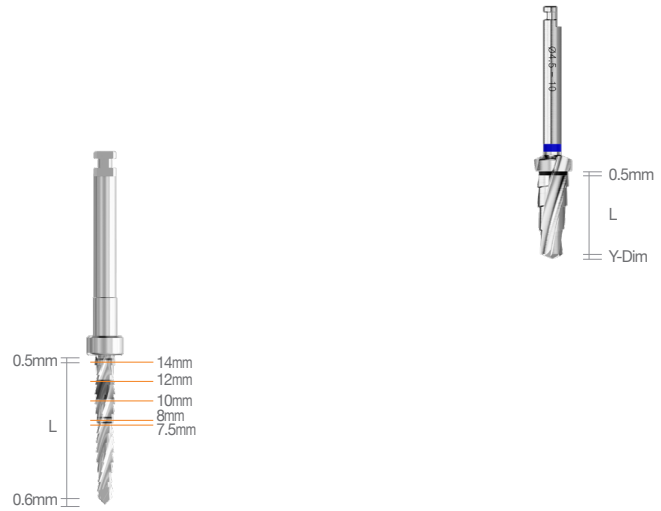
* Recommended rpm – Lindemann : 1,200~1,500 rpm / Straight & Step Drill : 800~1,200 rpm
 Countersinking in case of hard bone

SQ Surgical Instrument

Lindemann Drill

Lindemann Drill	L
DLINDST23	14

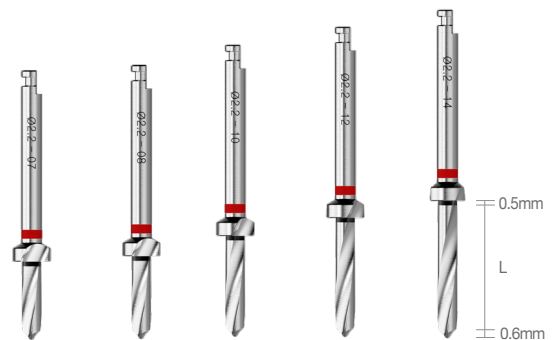
※ For side cutting to change drilling path



SQ Straight Drill

Ø2.2	L
DSQSD2207	7.5
DSQSD2208	8
DSQSD2210	10
DSQSD2212	12
DSQSD2214	14

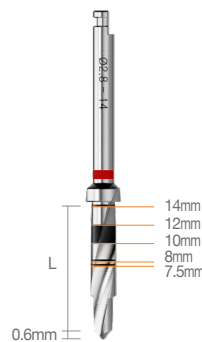
※ Hole formation for fixture placement



Step Drill 2.8

Ø2.8	L
DSQSD2814	14

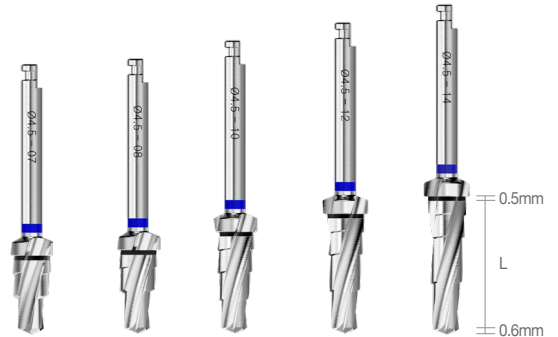
※ Hole formation for fixture placement



Step Drill

Ø3.5 Twist	Ø4.0 Twist	Ø4.5 Twist	Ø5.0 Twist	Ø5.5 Twist	L
DSQSTD3507	DSQSTD4007	DSQSTD4507	DSQSTD5007	DSQSTD5507	7.5
DSQSTD3508	DSQSTD4008	DSQSTD4508	DSQSTD5008	DSQSTD5508	8
DSQSTD3510	DSQSTD4010	DSQSTD4510	DSQSTD5010	DSQSTD5510	10
DSQSTD3512	DSQSTD4012	DSQSTD4512	DSQSTD5012	DSQSTD5512	12
DSQSTD3514	DSQSTD4014	DSQSTD4514	DSQSTD5014	DSQSTD5514	14

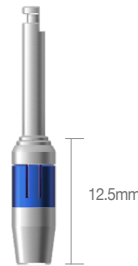
※ To prepare the installation site, reaching final width and depth with fixture—size color coding



Drill Extension

Code No.
DDE

※ To extend drill length

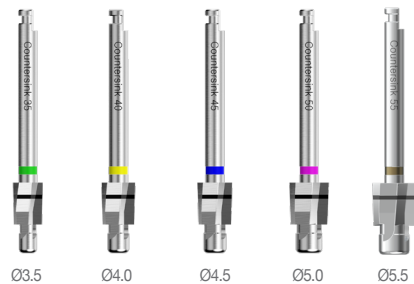


Countersink

Ø3.5	Ø4.0	Ø4.5	Ø4.5	Ø5.5
*DSQCS35	*DSQCS40	*DSQCS45	*DSQCS50	DSQCS55

※ Used to enlarge the opening of an implant site to the exact implant diameter to reduce the pressure in the bone around the implant neck specially when bone is dense

* Option



1.25 Hex Driver

	Extra Short	Short	Long	Extra Long	
Code No.	*DRHDES125	DRHDS125	DRHDL125	*DRHD23125	*DRHD35125
L	5.8	10	15	23	35

※ Used for Cover Screw, Abutment Screw, Healing Abutment

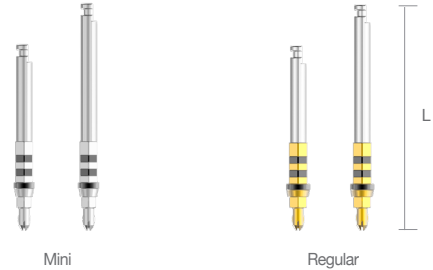
* Option



No-Mount Driver

	Mini (Short)	Mini (Long)	Regular (Short)	Regular (Long)
Code No.	DSNDMS	DSNDML	DSNDS	DSNDL
L	23.4	29.4	26.9	29.7

※ To place a fixture with a hand-piece

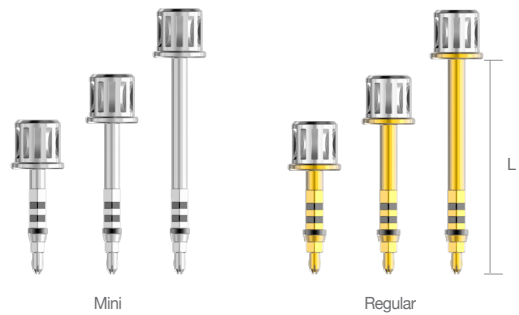


Ratchet Driver

	Mini (Short)	Mini (Long)	Mini (Extra Long)	Regular (Short)	Regular (Long)	Regular (Extra Long)
Code No.	DRMDSMS	DRMDSML	*DRMDSMEL	DRMDSS	DRMDSL	*DRMDSEL
L	12.2	19.3	29.3	15.7	22.8	29.3

※ To place a fixture with a ratchet

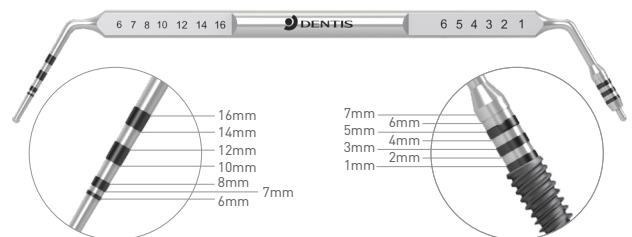
*: Option



Probe Depth Gauge

Code No.
DPDG

※ To verify the drilling depth or tissue volume





www.dentisimplant.co.kr/eng/



Tel. +82-1899-2804 | Fax. +82-53-583-2806
99, Seongseoseo-Ro, Dalseo-Gu, Daegu, Korea



Tel. +1-323-677-4363 | Fax. +1-323-677-4366
6 Centerpointe Drive, Suite 600 La Palma CA 90623



Tel. +021-5111-3828 | Fax. +021-5111-3828
上海市长宁区中山西路933号2205室

©2021 DENTIS Co.,Ltd.
All Right Reserved.
Specifications are subject to change without notice.
Trademarks are the property of DENTIS Co., Ltd. Or their respective owners.