

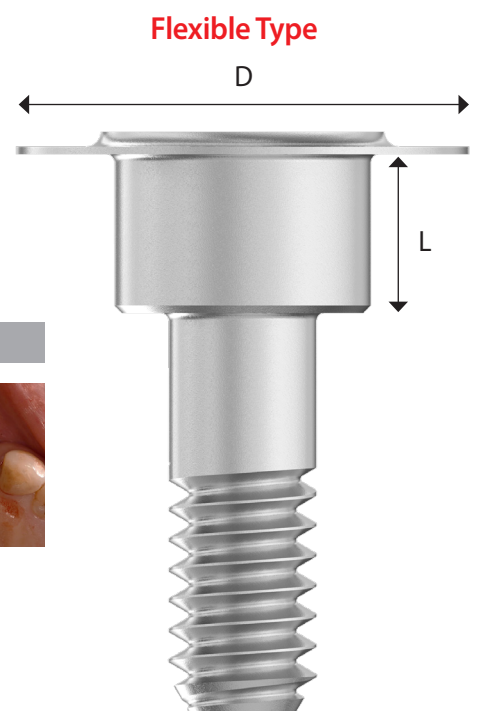
SAVE WIDE CAP

SAVE WIDE CAP makes applying GBR in various situations easy and comfortable

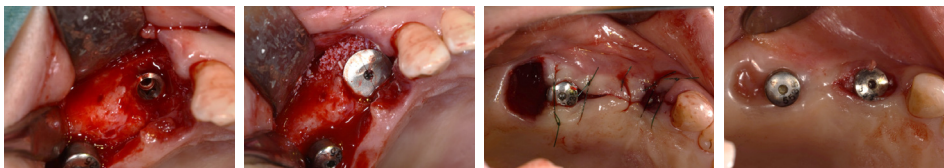
I Advantage

- ✓ Simple GBR procedure
- ✓ It's easy to fix bone through the direct connection between the fixture and SWC
- ✓ Whether exposed or not, SWC can be used without worrying about inflammation
- ✓ It can be used as a flexible membrane replacement

I Design



Clinical Case 1

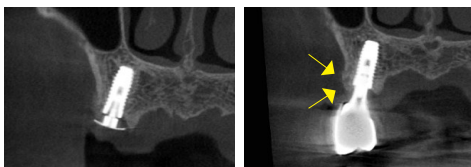


① #14 SQ 4.5*12mm

② SAVE WIDE CAP without Membrane

③ Suture

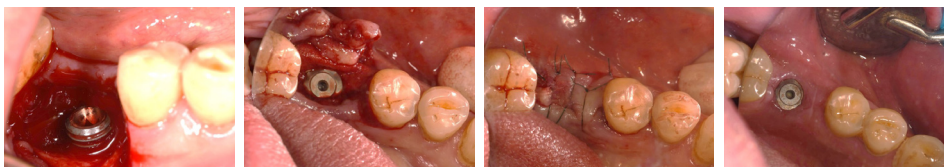
⑤ After 3 Months



C/T for verification

Final C/T

Clinical Case 2

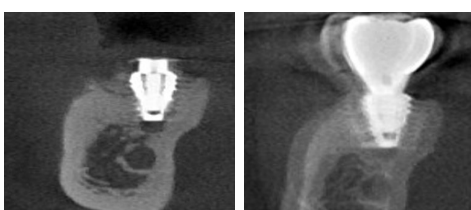


① #46 SQ 6.0*7mm

② SAVE WIDE CAP

③ Suture

④ After 3 Months



C/T for verification

Final C/T

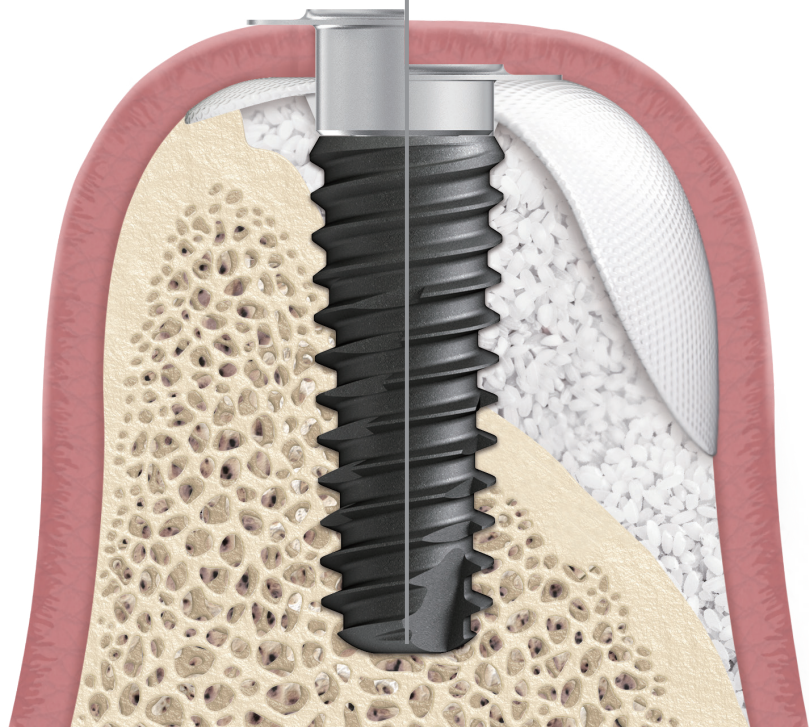
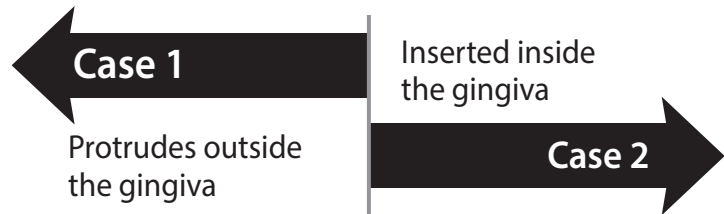


SAVE WIDE CAP VIDEO

SAVE

WIDE CAP

I Application

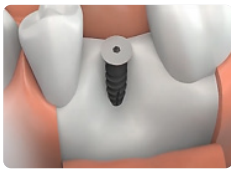


Apply an adsorption barrier to the upper fixation to minimize predictable skeletal formation and complications.

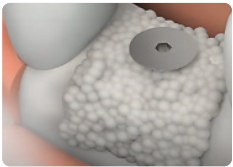
"Save wide cap" Process



Fixture placement



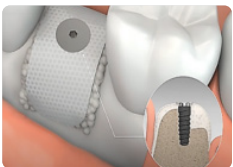
Save wide cap tightening



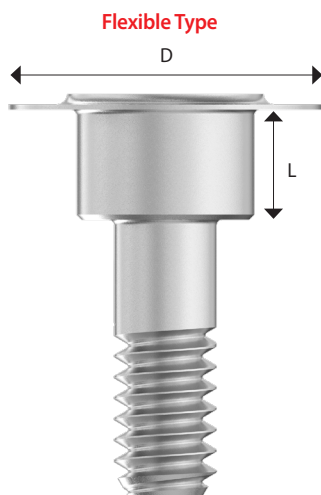
Bone transplant



Save wide cap on the membrane



Seal around the membrane



I Specification

D (Diameter)	Φ6	Φ7	Φ8
	2mm	2mm	2mm
L (Length)	3mm	3mm	3mm
	4mm	4mm	4mm

D: Diameter L: Length