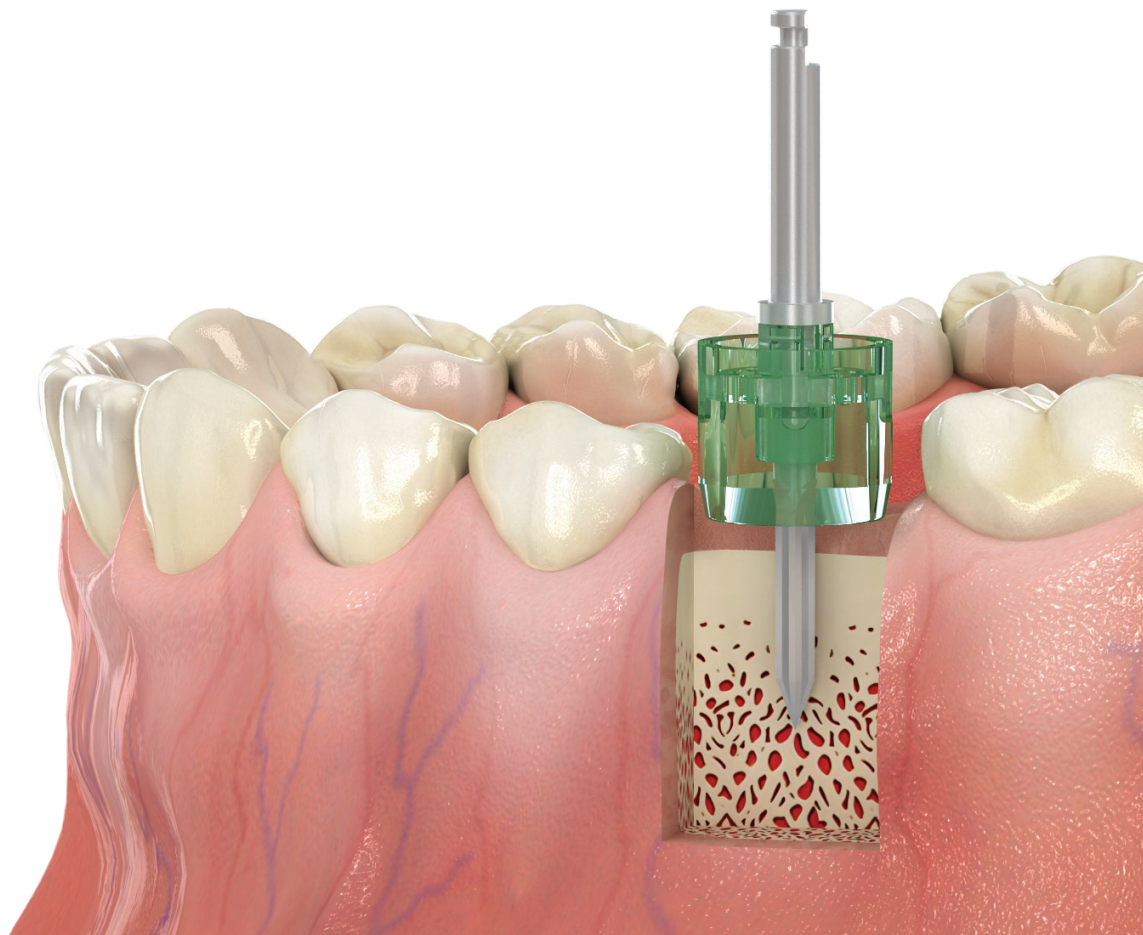
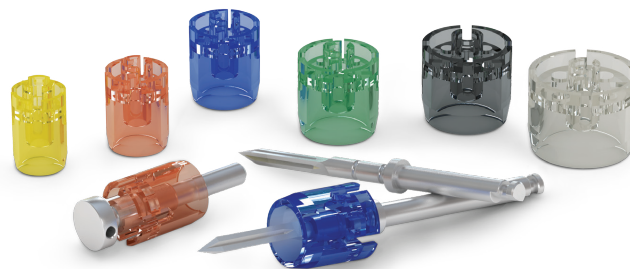


GUIDE **WHEEL**

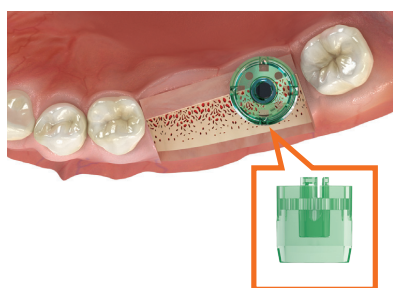
Surgical Guide Tool



Simple Solution for Implant Placement



No Guessworks! Visualize Initial Drilling and Path of Osteotomy!

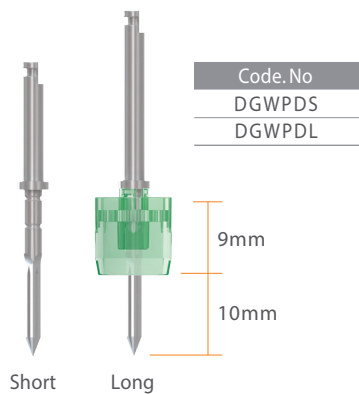


- + **Visualized Procedure**
Visible surgery site with transparent material
- + **Simple Protocol**
Can be used with any initial drill
- + **Enhanced Irrigation**
Mechanically enhanced irrigation system
- + **Avoid Cross Contamination**
One time use, disposable
- + **Versatile**
Applicable to single to multiple cases
- + **Reduced Chair Time**
Easy determination of osteotomy site with simple comparison between Guide wheel and adjacent tooth
- + **Economical Solution**
Avoid using expensive and complex guided surgery system

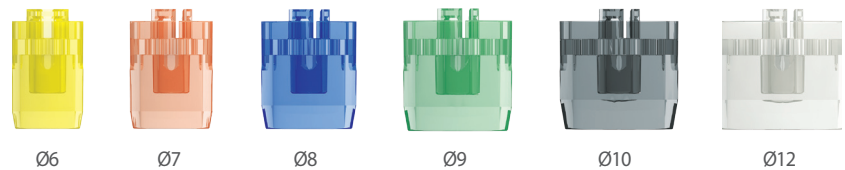
- ▶ Compare guide wheel to opposing tooth to visualize safety margin and initial drilling path
- ▶ Visualize prosthetic result by comparing the size of guide wheel to adjacent teeth
- ▶ Assure the position of implants covered by tissue on the second stage surgery

Products

Initial Drill



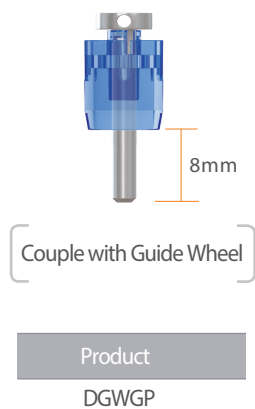
Guide Wheel



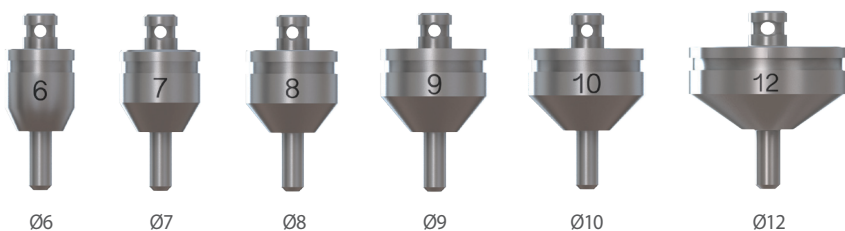
- ▶ Coupled with Initial Drill, utilize Guide Wheel for initial osteotomy and measurement for future prosthesis

Product	DGW6	DGW7	DGW8	DGW9	DGW10	DGW12
color	Yellow	Pink	Blue	Green	Black	Clear
Size	Ø6	Ø7	Ø8	Ø9	Ø10	Ø12

Guide Pole



Guide Pin



- ▶ Apply Guide Pin on osteotomy to visualize future prosthesis
- ▶ Apply Guide Pin for multiple cases

Product	DGWP6	DGWP7	DGWP8	DGWP9	DGWP10	DGWP12
color	Yellow	Pink	Blue	Green	Black	Clear
Size	Ø6	Ø7	Ø8	Ø9	Ø10	Ø12





6 Centerpointe Dr. Ste 600, La Palma, CA 90623
Tel. 323-677-4363 | Fax. 323-677-4366 | www.dentisusa.com

Copyright © DENTIS Co., LTD. All Right Reserved. Specifications are subject to change without notice.
Trademarks are the property of DENTIS Co., LTD. or their respective owners.

