



*i*9000

ALL IN for You

THE EVOLUTION OF
INTRAORAL SCANNING

MEDIT

ALL IN ON INNOVATION

The Medit i900 features cutting-edge tech for smoother scanning, easier handling and improved scan accuracy.

A smarter, easier way to work.

TouchBand™

- Real-time light and haptic feedback
- Button-free rotation



Wand Tip

- Multiple tip sizes to customize patient comfort

Intelligent Sensor

- LED and haptic feedback

TouchPad

- Customizable command actions
- Mouse-free with smart interaction

Fast Preheating

- Ready to scan instantly

3rd-Generation Optical Engine

- Advanced 10-bit camera technology

Light & Compact

- 165g wand weight
- 233mm compact size

Unibody design

- Jointless design with perfect balance
- No biohazard concerns
- Reinforced, hassle-free cable



TouchBand™ & TouchPad



Unmatched convenience and portability



ALL IN ON **PERFORMANCE**

3rd-Generation New Optical Engine

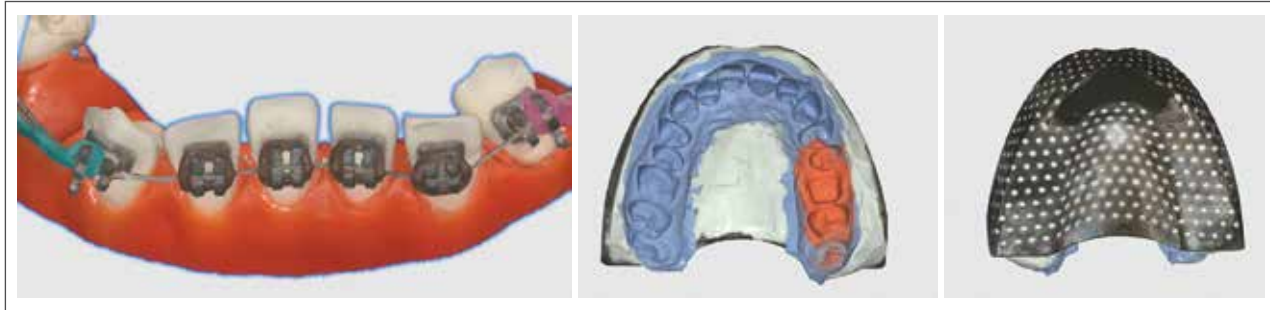
The i900 features a groundbreaking optical engine with 10-bit imaging technology, delivering unmatched image clarity, true-to-life colors and deep scanning depth that captures every detail.

Enhanced image density and increased scan depth provides a seamless, efficient experience.



ALL IN ON **PRECISION**

The i900's cutting-edge optical engine allows you to overcome scanning obstacles like reflective metals and tight spaces in the oral cavity.



The i900 boasts a larger scanning area for fast, comprehensive data capture, making it the ideal choice for edentulous cases.



ALL IN ON USABILITY

With a lightweight, ergonomic design, the i900 ensures anyone in your clinic can master scanning with unparalleled ease.

An increased field of view captures a wider area with minimal effort, ensuring speed and accuracy in every session.

A new unibody design ensures perfect balance and eliminates contamination worries.

Patient Comfort

Multiple tip sizes customize comfort.



S: 17.9 x 13.1mm
M: 21.8 x 16.3mm
L: 26.7 x 19.7mm

Revolutionary TouchBand™ & TouchPad Functionality

Level up your experience with a scanner that redefines the scanning process with an intuitive TouchBand and TouchPad.

Our groundbreaking 360° TouchBand provides easy navigation with haptic feedback. A button-free operation gives you precise control from any angle and allows you to easily start and stop scanning.

Ergonomic with Smart Interaction

Light. Compact. Portable.

Featherlight at 165 grams (5.8 ounces) and built for easy scanning, our compact, portable scanner offers unbridled freedom.

Vibrant LED Indicators

LED indicators on the bottom offer vivid and quick visibility of your scanner's status - further simplifying your overall experience



ALL IN ON CONVENIENCE

Enjoy a hassle-free experience right from the start

The Medit i900 is the complete scanning solution for your practice. Every i900 comes complete with an optimized and managed laptop—meaning you will never need to worry about software changes or suboptimal performance. Plus, every i900 is backed by direct Medit service and a 3-year warranty, ensuring your peace of mind.



Simple to set up. Start scanning right out of the box.

ALL IN One Package

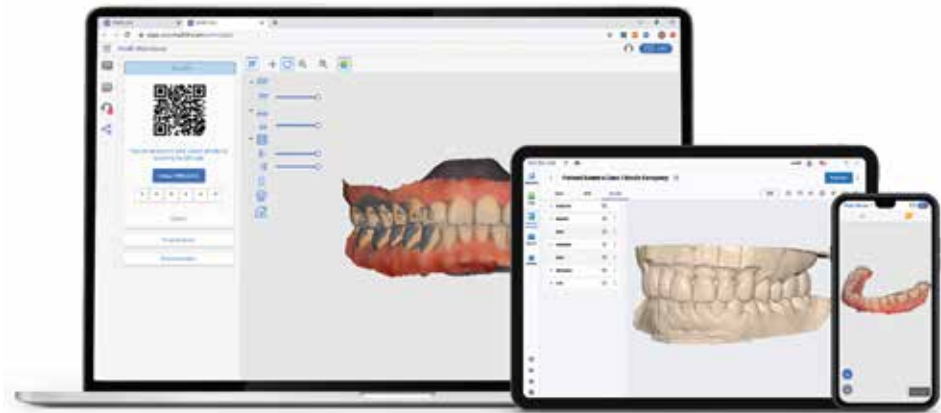


- i900 wand and cradle
- Four wand tips in two sizes
- 2 flexible, hassle-free cables
- Preconfigured laptop with Medit Link installed
- 3-year warranty and direct service from Medit for total peace of mind

Seamless Integration

Medit Link, our fully open system, integrates the i900 with your existing practice software, enhancing workflows without complication. It constantly evolves with continuous, adaptive software updates to improve smart features, patient consultations and lab communication.

MEDIT Link





ALL IN ON CARE

A better patient experience

The i900 allows you to focus on what you do best: providing outstanding patient care. High-detail scans boost treatment acceptance and reduce lab remakes so your patients get what they need fast. Plus, multiple tip sizes help you create the most comfortable patient experience possible.

We're ALL IN for Your Success

Specifications

Category	Medit <i>i</i> 900	
Scanning technology	Capture Rate	Fastest
	Imaging technology	3D in-motion video technology/ 3D full-color streaming capture
	Anti-fogging technology	Adaptive anti-fogging
	Camera grab	10 bit
Accuracy	Full-arch	10.9 $\mu\text{m} \pm 0.98$
Handpiece	Dimensions	223.4 x 36.7 X 35.3mm
	Total weight	165g
Tip	Size	L: 26.7 x 19.7mm M: 21.8 x 16.3mm S: 17.9 x 13.1mm (sold separately)
	Field of view (Resolution)	L: 18 x 15mm (552 x 460 px) M: 14 x 11.5mm (428 x 352 px) S: 10 x 8 mm (308 x 252 px)
	Autoclavable	Up to 150 times Autoclave 121°C 30 mins Autoclave 134°C 4 mins Autoclave 135°C 10 mins
	Material	PPSU Polyphenylsulfone (mostly used for baby bottles)
	Reversible tip	No
Cable	C Power Delivery: 2m & 2.5m	

FPO Pending delivery

i9000

The Medit i900 isn't just leading technology with advanced usability. No hidden fees or ongoing subscriptions—just a single package with everything you need to streamline workflows and patient care.

We're ALL IN for Your Success.



Official MEDIT distribution, training and support partner for Romania
Bucharest, No. 99 A.I. Cuza Boulevard | 0371-781 111 | www.dentaldirect.ro

www.Medit.com | © Medit 2024