



<http://guide.zenith3d.co.kr/>



Tel. +82-53-583-2804 | Fax. +82-53-583-2806  
99, Seongseoseo-Ro, Dalseo-Gu, Daegu, Korea



Tel. +1-323-677-4363 | Fax. +1-323-677-4366  
6 Centerpointe Drive, Suite 600 La Palma CA 90623



Tel. +021-5111-3828 | Fax. +021-5111-3828  
上海市长宁区中山西路933号2205室

©2021 DENTIS CO.,LTD.

All Right Reserved.

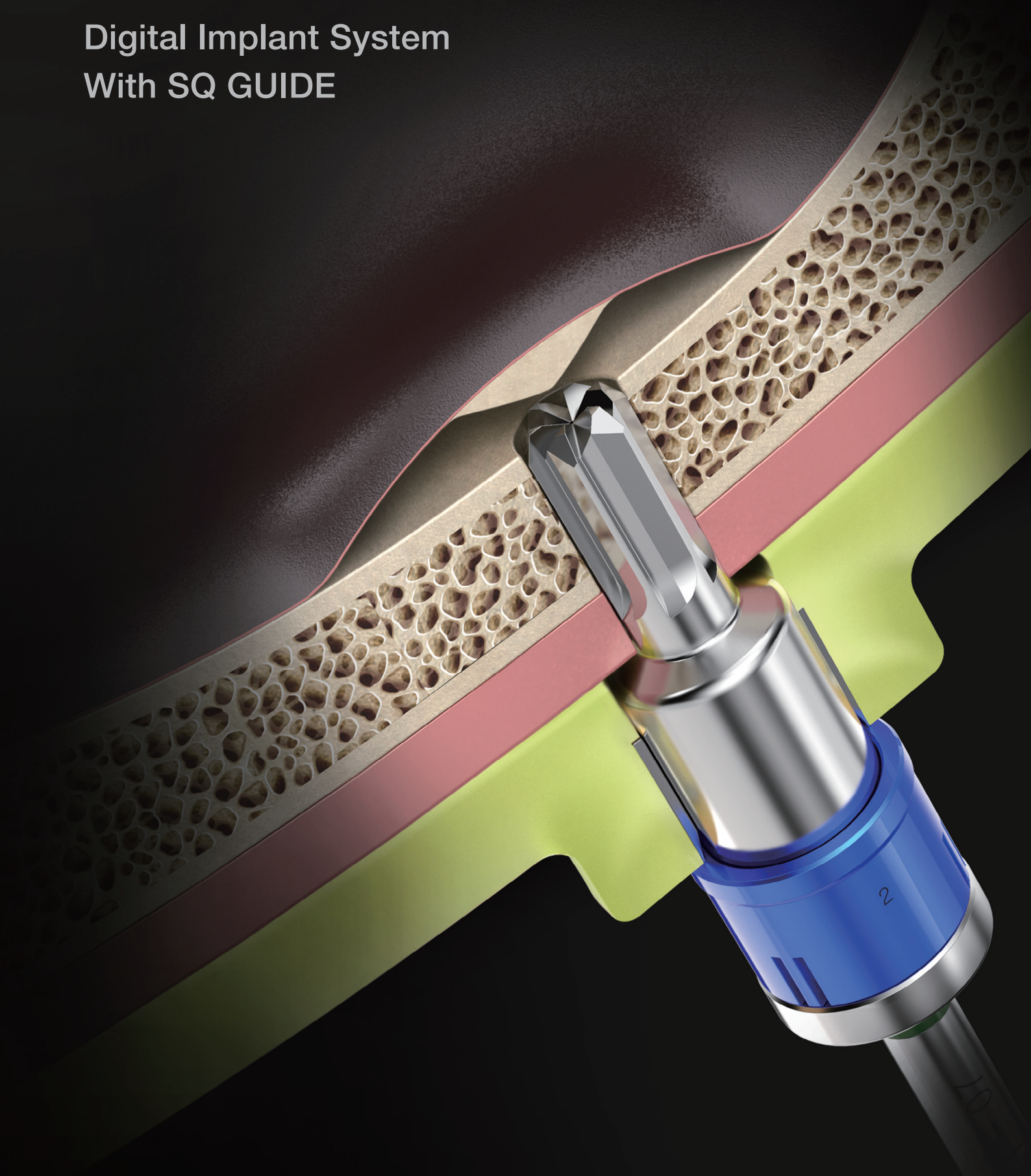
Specifications are subject to change without notice.

Trademarks are the property of DENTIS CO., LTD. Or their respective owners

# SQ SINUS GUIDE

—

Digital Implant System  
With SQ GUIDE

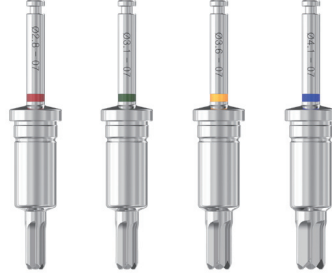


# SQ SINUS GUIDE KIT

Flapless sinus surgery by crestal approach



Initial Drill



Sinus Guide Drill



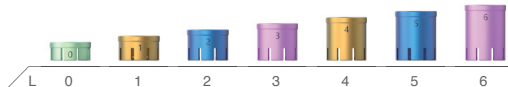
Titanium Brush



Depth Gauge

SQ SINUS GUIDE Stopper

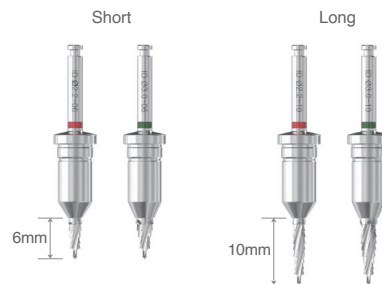
Bone Well



### 1. SQ SINUS Guide Initial Drill

- Drill 1mm short of penetrating the lower edge of the maxillary sinus
- Use with stopper for safe elevation
- Recommended RPM : 800–1,000

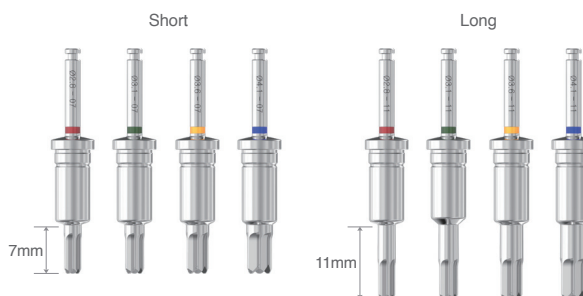
Code	Ø2.2	Ø3.0
Short	DSQSGID2206	DSQSGID3006
Long	DSQSGID2210	DSQSGID3010



### 2. SQ SINUS Guide Sinus Drill

- Use with SQ Guide system
- Safe membrane elevation during maxillary sinus surgery
- Select the final drill diameter based on bone quality
- Use with stopper for safe elevation
- Autogenous bone can be obtained during low-speed drilling
- Recommended RPM : 40Ncm 50RPM

Code	Ø2.8	Ø3.1	Ø3.6	Ø4.1
Short	DSQSGSD2807	DSQSGSD3107	DSQSGSD3607	DSQSGSD4107
Long	DSQSGSD2811	DSQSGSD3111	DSQSGSD3611	DSQSGSD4111



### 3. SQ SINUS Guide Stopper

- The stopper number is the length at which the drill stops when the drill is fastened
- It can be adjusted in 1mm increments for safe drilling

Length	0mm	1mm	2mm	3mm	4mm	5mm	6mm
Code	DSQSGS00	DSQSGS01	DSQSGS02	DSQSGS03	DSQSGS04	DSQSGS05	DSQSGS06



### 5. SQ GUIDE Depth Gauge

- Measures the depth of the placement hole and height of tissue

Code
DSQSGDG



### 6. SINUS Drill Bone Brush

- It is used when the bone chip cannot cut during drilling
- Drill after removing bone chips



Code
DSDBB

### 7. Bone Well

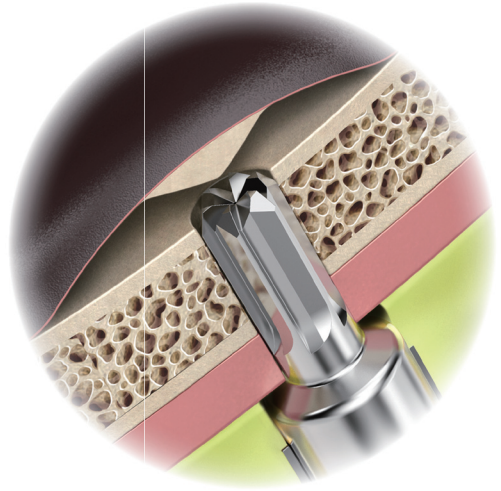
- Used for storing graft material or hydration



Code
DSSBW

## Safe Membrane Elevation

- The unique drill design enables safe elevation
- Sufficient bone removal is possible even with low-speed drilling
- Round tip drill prevents membrane perforation

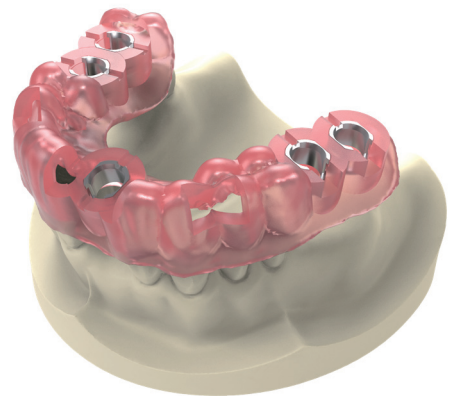
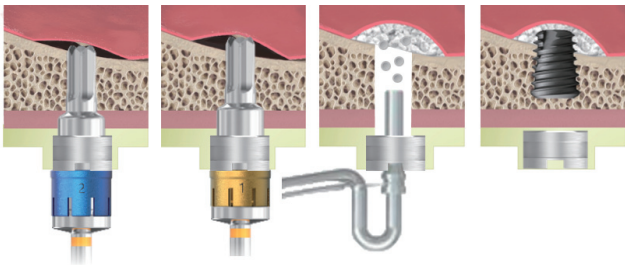


## 3 Dimensional Elevation

- 3D elevation is possible even with irregular bone shape

## Simple maxillary sinus surgery

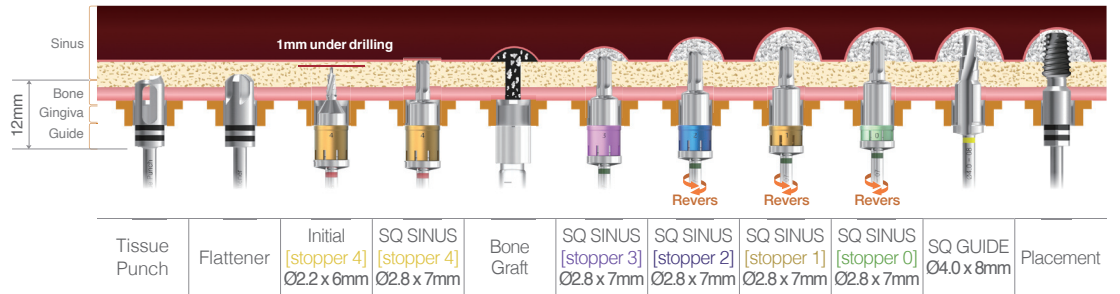
- Bone grafting and sinus elevation are possible with guide attached



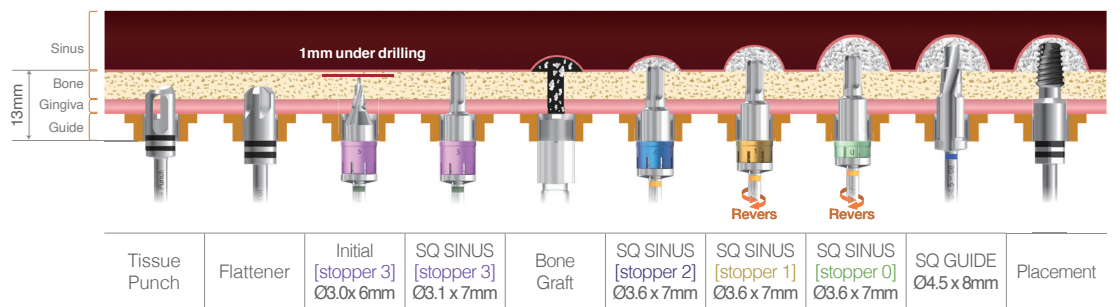
# SQ SINUS GUIDE KIT Protocol

Fixture	Bone	ID2,2	SD2.8	ID3.0	SD3.1	SD3.6	SD4.1
Ø4.0	Soft	●.....●					
	Normal	●.....●.....●					
Ø4.5	Soft			●.....●			
	Normal			●.....●.....●			
Ø5.0	Soft			●.....●			
	Normal			●.....●.....●			
Ø5.5	Soft			●.....●.....●			
	Normal			●.....●.....●.....●			

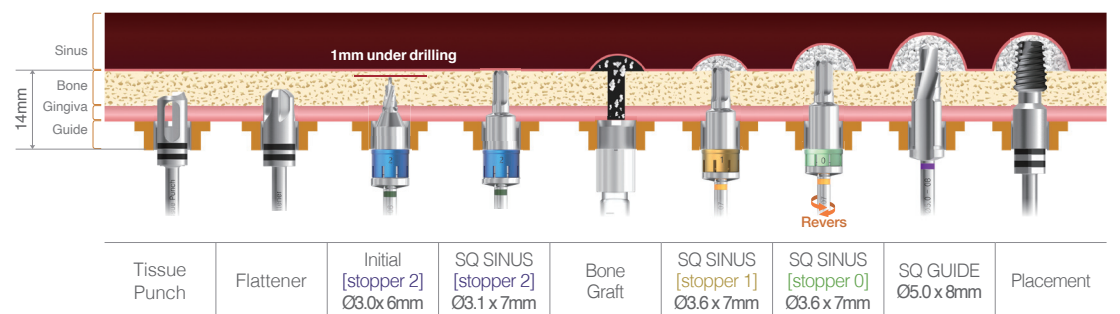
Remaining bone 3mm, Normal bone Ø4.0 Fixture X 8mm, Offset : 9mm



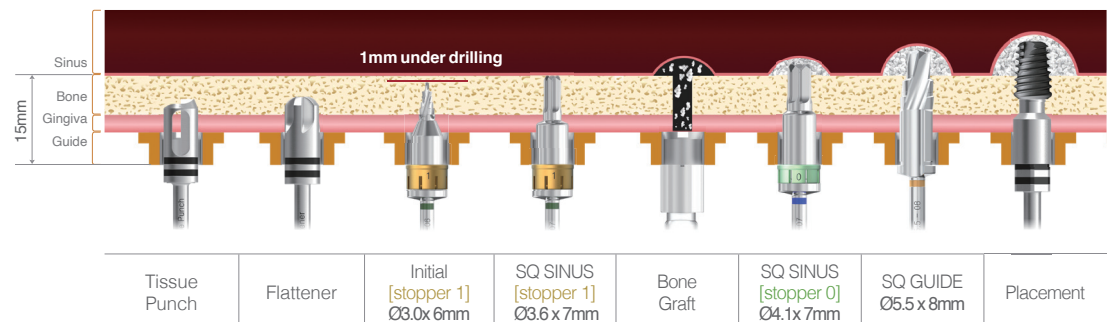
Remaining bone 4mm, Normal bone Ø4.5 Fixture X 8mm, Offset : 9mm



Remaining bone 5mm, Normal bone Ø5.0 Fixture X 8mm, Offset : 9mm



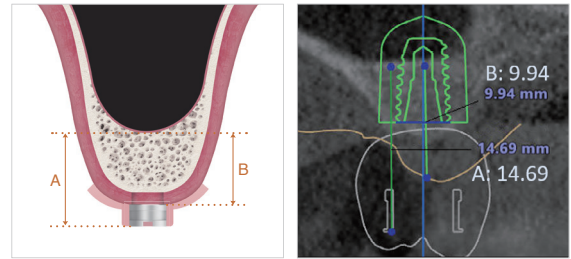
Remaining bone 6mm, Normal bone Ø5.5 Fixture X 8mm, Offset : 9mm



# Surgery Protocol

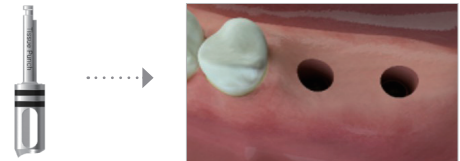
## Measurements required for diagnosis

A : Length from the top of the guide sleeve to the bottom of the maxillary sinus  
 B : Length from the maxillary sinus to the gingiva



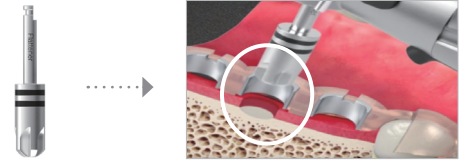
### 1. Tissue Punch

Remove the gingiva using the tissue punch.



### 2. Flattener Drill

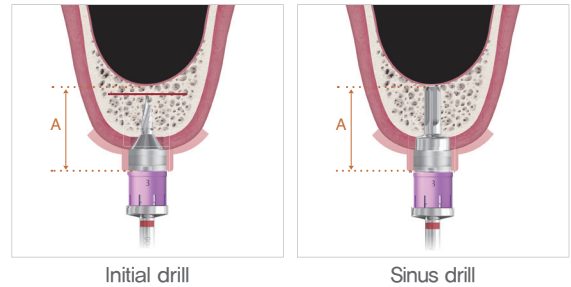
Use a tissue punch to flatten the top of the irregular alveolar crest.



### 3. Sinus Drill After Initial Drill

After drilling 1mm under the maxillary sinus with an Initial Drill (800~1000RPM), then slowly drill with the Sinus Drill up to the maxillary sinus (40Ncm, 50RPM).

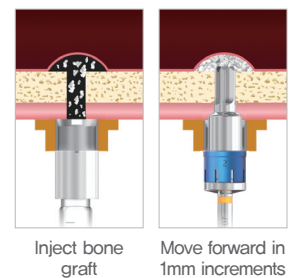
※ To adjust the depth, always use a stopper and low-speed drilling (50rpm) without water.



### 4. Move the Sinus Forward

After injecting the bone graft material with the guide installed, reduce the stopper in 1mm increments to the desired height.

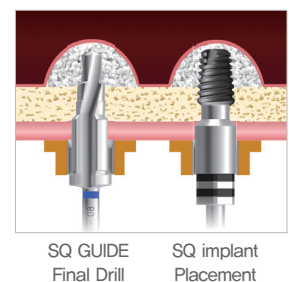
※ To adjust the depth, always use a stopper and low-speed drilling (50RPM) without water.



### 5. Final Drilling

Fixture placement after using Final Drill in SQ GUIDE KIT

※ If the remaining bone is less than 3 mm, there is a high possibility that the initial fixation cannot be achieved, so only maxillary sinus bone grafting should be done.

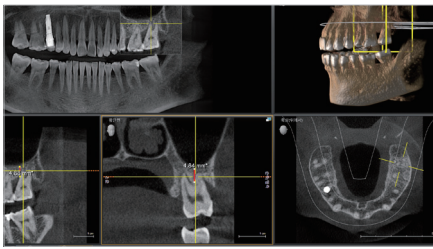


# Clinical Case

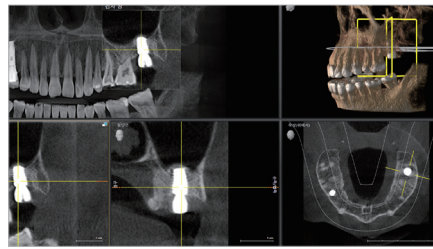


## #27 Implant Extraction and Immediate Sinus Lift

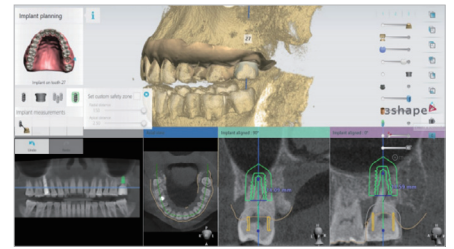
Dr. Sangjin Suh  
Place  $\varnothing 5.5 \times 8\text{mm}$  Fixture



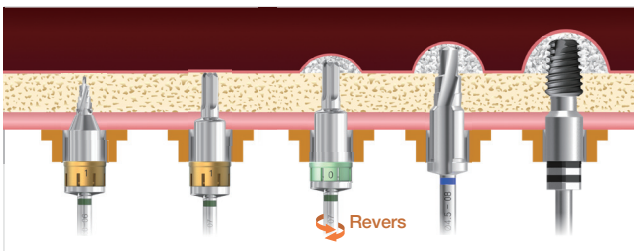
Pre- operational panorama



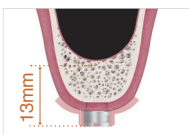
Panorama after SQ SINUS GUIDE



SQ SINUS GUIDE Design

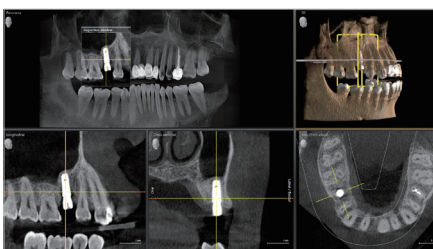


SQ SINUS GUIDE drilling protocol

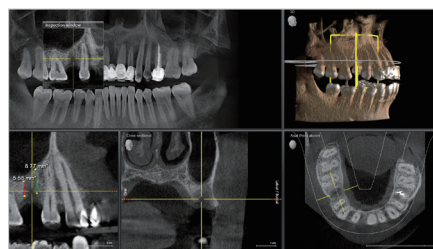


## #15 Implant Surgery with Elevated Sinus Floor

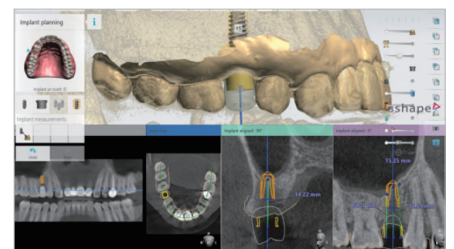
Dr. Sangjin Suh  
Place  $\varnothing 4.5 \times 10\text{mm}$  Fixture



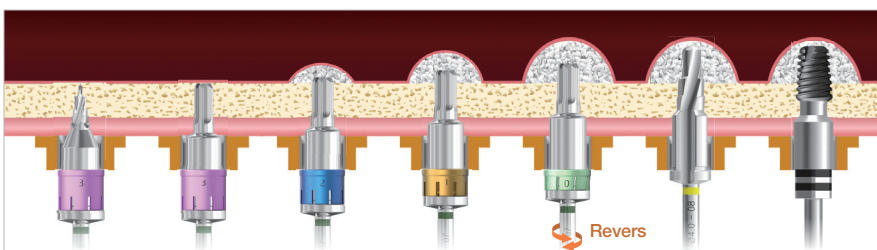
Pre- operational panorama



Panorama after SQ SINUS GUIDE



SQ SINUS GUIDE Design



SQ SINUS GUIDE drilling protocol