

SAVE REMOVER

Perfect Solution Kit for Emergency Case

SCREW REMOVER

- Used when the screw inside the fixture was broken
- After confirming the specifications of the connection and screw of the fixture, use a suitable guide to safely remove the damaged screw

FIXTURE REMOVER

- Used for cases with damaged implants or surrounding bone due to excessive torque during implantation



SAVE REMOVER COMPONENTS

• Screw Remover System



Screw Remover for Tip

- After fixing the drill guide fastened to the Guide Holder to the fixture, insert it into the guide.
- After the drill touches the fractured side of the screw, it rotates counterclockwise.
- Recommend RPM : Less Reverse 25



Screw Remover Drill

- When Remover Drill couldn't remove the screw.
- Insert holes in the drill guide under a sufficient irrigation and rotate counterclockwise to create on the fractured side of the screw.
- Recommend RPM : Reverse 1,200



Screw Remover Tip

- After using the Remover Drill, rotate counterclockwise to remove the screw.
- Recommend RPM : Less Reverse 80



Guide Drill

- Use with Guide Holder to prevent drill movement during drilling.



Guide Holder

- A guide that fixes to the implant fixture to prevent shaking during drilling.
- A holder that fastens and fixes the Guide Drill before or during the procedure to the implant fixture.

• Fixture Remover System



Fixture Remover Screw

- Rotate counterclockwise to fix the implant fixture and remove the fixture.
- Recommend RPM : Less Reverse 50

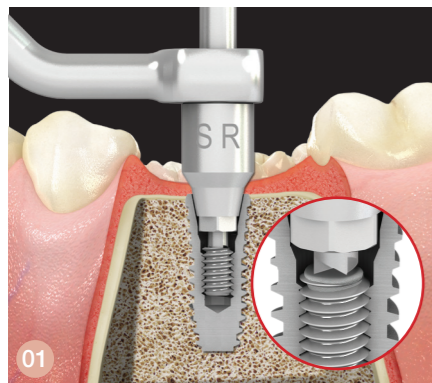


Wrench

- A Wrench is tightened to use the fixture screw remover manually.

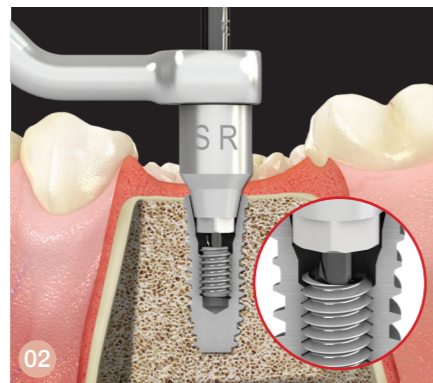
SAVE REMOVER GUIDE

SCREW REMOVER SYSTEM



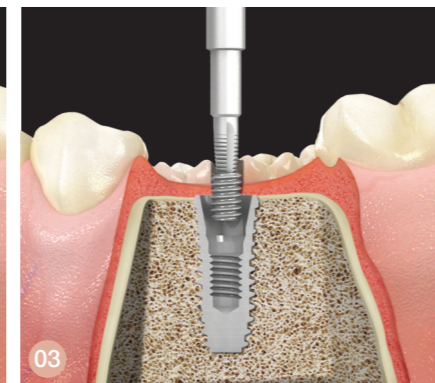
After fastening the drill guide to the fixture, Screw Remover for Tip counterclockwise rotate to remove the broken screw.

※ Recommend Torque ▶ Reverse 1,200RPM



When Screw Remover for Tip can not be removed, use the Screw Remover Drill to form holes in the direction of the broken screw.

※ Recommend Torque ▶ Reverse 1,200RPM



Use the Screw Remover Tip to remove the broken screws at the hole was created by Screw Remover Drill.

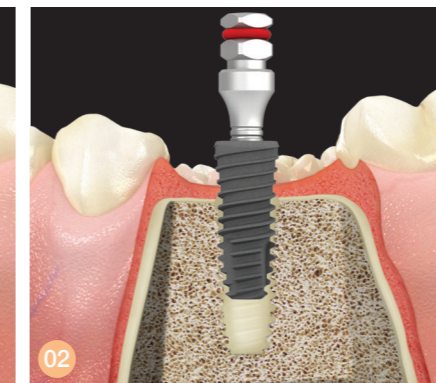
※ Recommend Torque ▶ Reverse 80RPM

FIXTURE REMOVER SYSTEM



Rotate Fixture Remover Screw counterclockwise to fixture.

※ Recommend Torque ▶ Less Reverse 50 RPM



Using a Wrench, rotate the fixture counterclockwise again to remove the fixture.

※ Recommend Torque ▶ Less Reverse 50 RPM