

# SAVE REMOVER

## Perfect Solution Kit for Emergency Case

### SCREW REMOVER

- Used when the screw inside the fixture was broken
- After confirming the specifications of the connection and screw of the fixture, use a suitable guide to safely remove the damaged screw

### FIXTURE REMOVER

- Used for cases with damaged implants or surrounding bone due to excessive torque during implantation

## Perfect Emergency Solution

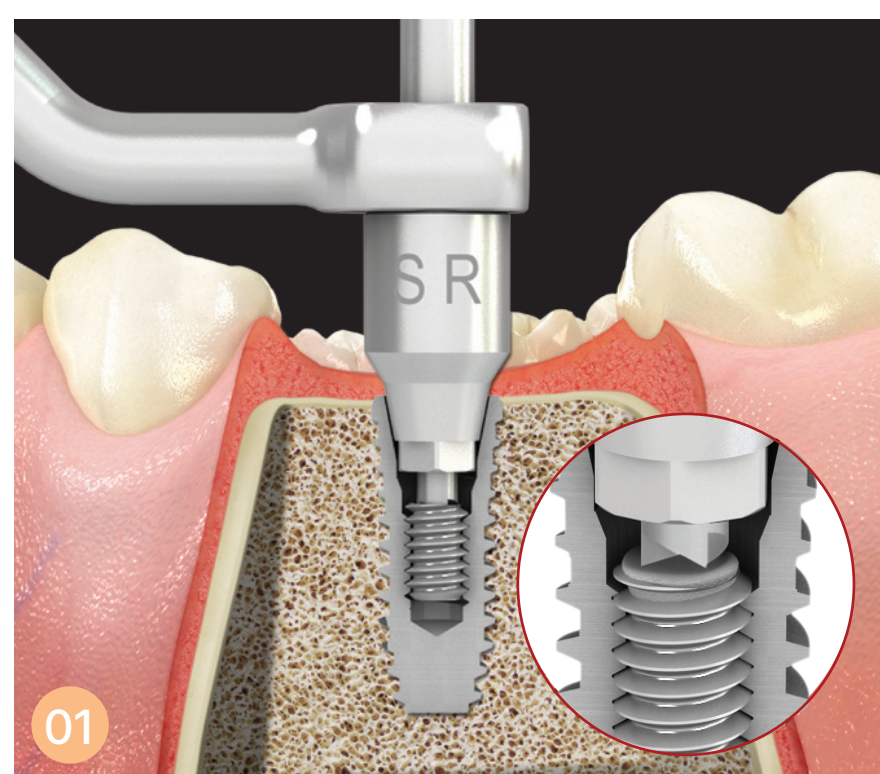
### SAVE REMOVER



CODE: SRK

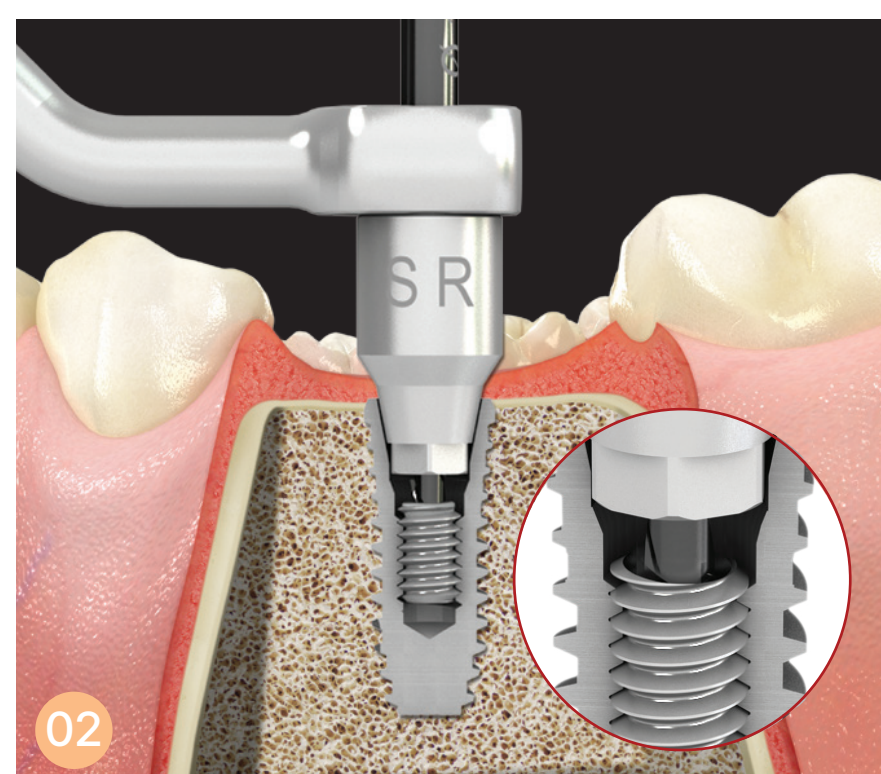
## SAVE REMOVER GUIDE

### I SCREW REMOVER SYSTEM



After fastening the drill guide to the fixture, Screw Remover for Tip counterclockwise rotate to remove the broken screw.

※ Recommend Torque ▶ Reverse 1,200RPM



When Screw Remover for Tip can not be removed, use the Screw Remover Drill to form holes in the direction of the broken screw.

※ Recommend Torque ▶ Reverse 80RPM



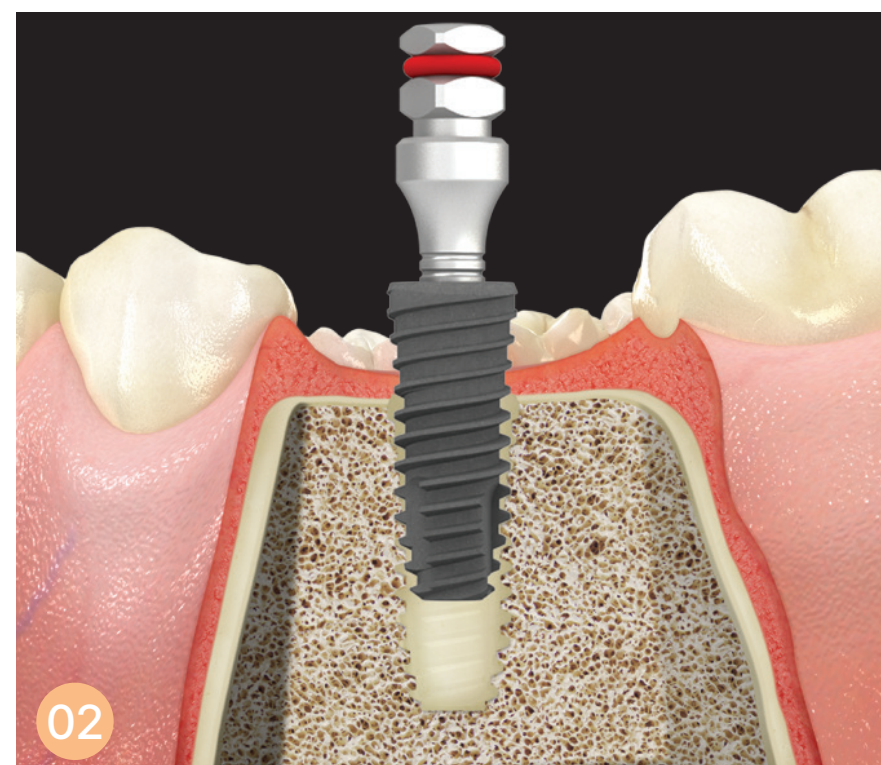
Use the Screw Remover Tip to remove the broken screws at the hole was created by Screw Remover Drill.

※ Recommend Torque ▶ Reverse 50RPM

### I FIXTURE REMOVER SYSTEM



Rotate Fixture Remover Screw counter clockwise to fixture.



Using a Wrench, rotate the fixture clockwise again to remove the fixture.

※ Recommend Torque ▶ Reverse 50RPM

# SAVE REMOVER COMPONENTS

## I SCREW REMOVER SYSTEM



### Screw Remover Tip

- After fixing the drill guide fastened to the Guide Holder to the fixture, insert it into the guide.
- After the drill touches the fractured side of the screw, it rotates counterclockwise.
- Recommend RPM : Less Reverse 25

0.8	TD-08
1.3	TD-13



### Guide Holder

- A guide that fixes to the implant fixture to prevent shaking during drilling.
- A holder that fastens and fixes the Guide Drill before or during the procedure to the implant fixture.

Code	GH-01
------	-------



### Screw Remover Drill

- When Remover Drill couldn't remove the screw.
- Insert holes in the drill guide under a sufficient irrigation and rotate counterclockwise to create on the fractured side of the screw.
- Recommend RPM : Reverse 1,200

0.8	D-RED08
1.3	D-RED13



### Torque Tip

- M.H : An instrument that connects to the screw removal tip to manually remove the abutment screw.
- M.W : An instrument that connects to the screw removal tip to remove the abutment screw using a wrench.

M.H	TH-01
M.W	TH-04



### Screw Remover for Tip

- After using the Remover Drill, rotate counterclockwise to remove the screw.
- Recommend RPM : Less Reverse 80

0.8	D-REM08
1.3	D-REM13



### Flat-Tip Driver

- When the body of a one-piece abutment is fractured or the hex portion of the suprastructure is damaged, create a straight groove using a 0.9 mm round bur, then rotate in reverse to remove the fractured part.

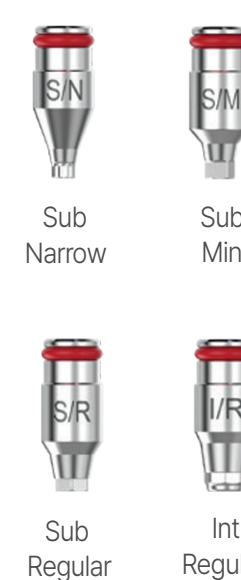
Code	FTD-01
------	--------



### Tap Drill

- When the internal threads of the fixture are damaged, rotate clockwise to restore the threads.
- Recommend RPM : Less Reverse 100

1.4	TD-N
1.6	TD-M
2.0	TD-R



### Guide Drill

- Use with Guide Holder to prevent drill movement during drilling.

Sub Narrow	G-SN
Sub Mini	G-SM
Sub Regular	G-SR
Int Regular	G-IR

## I FIXTURE REMOVER SYSTEM



### Fixture / Abutment Remover Screw

- Rotate counterclockwise to fix the implant fixture and remove the fixture.
- Recommend RPM : Less Reverse 50

Narrow	FRD-03
Mini & Regular	FRD-01



### Wrench

- A Wrench is tightened to use the fixture screw remover manually.

Code	SDWRH-02
------	----------



### R.C. Ext (Extension)

- When using the wrench, if accessibility to the surgical site is limited, attach it to the wrench for use (+10 mm).

Code	RE-02
------	-------

**DENTIS**

tel. 323.677.4363

fax. 323.677.4366

info@dentisusa.com

www.dentisusa.com